

# *High Power Lasers... Another approach to Fusion Energy*

**John Sethian  
Plasma Physics Division  
Naval Research Laboratory  
Washington, DC**



# *Main points of the talk*

## **Fusion Energy based on lasers and direct drive targets**

Can lead to an attractive electricity generating power plant

## **Developing Laser Fusion as an integrated system**

Simultaneously addressing the science and engineering

## **Direct Drive Pellet Designs**

**Computer Models** show target gain  $> 150$

(need  $>100$  for energy)

Underlying codes backed with experiments

## **KrF Lasers**

Attributes : Beam uniformity, wavelength, cost, scaling to large systems

Technologies for rep-rate & efficiency look good,

Biggest challenge: durability of pressure foil

## **Progress made in the other Laser IFE components**

# The Naval Research Laboratory (NRL)



- **NRL is the Navy's Corporate Research Laboratory**

- 3000 employees, (900 PhDs + 400 MSc)
- \$800 M /year budget

- **Field sites:**

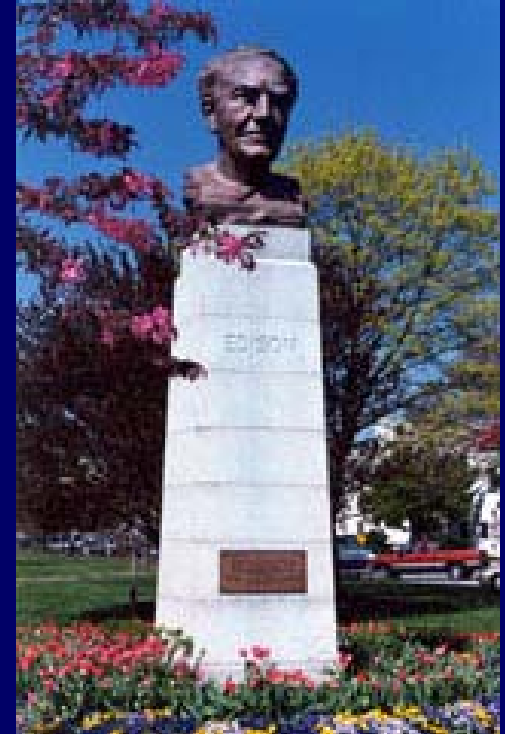
- Washington DC (Main site)
- Stennis, MS
- Monterey, CA
- Chesapeake Bay, MD

**NRL conducts a broadly-based multidisciplinary program of scientific research and advanced technology**

Radar

GPS

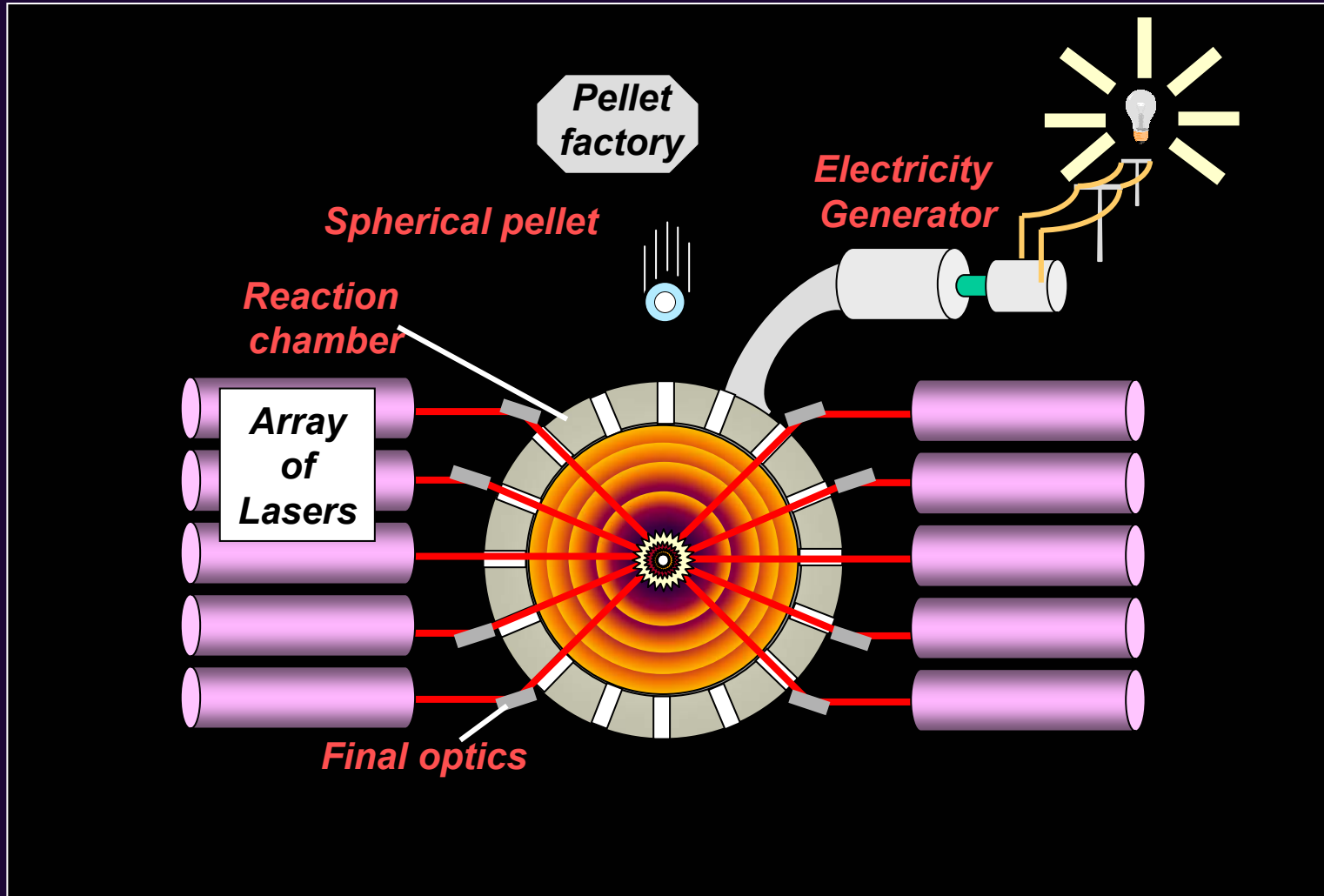
Viking (First useable satellite)



**NRL Leads a National Program to develop the science and technologies for Laser Fusion Energy:**

***The NRL Nike Program and the High Average Power Laser (HAPL) Program***

# The laser fusion energy concept



# Why we like fusion energy with lasers, direct drive targets and solid wall chambers

## •Physics and engineering looks good:

- Target simulations show high gains ( $>150$ ) needed for energy
- Lasers appear to be able to meet physics & engineering requirements

## •Inherent Engineering Advantages:

- Complex components (laser, target factory) are separated from the reaction chamber
- Modular nature of the components

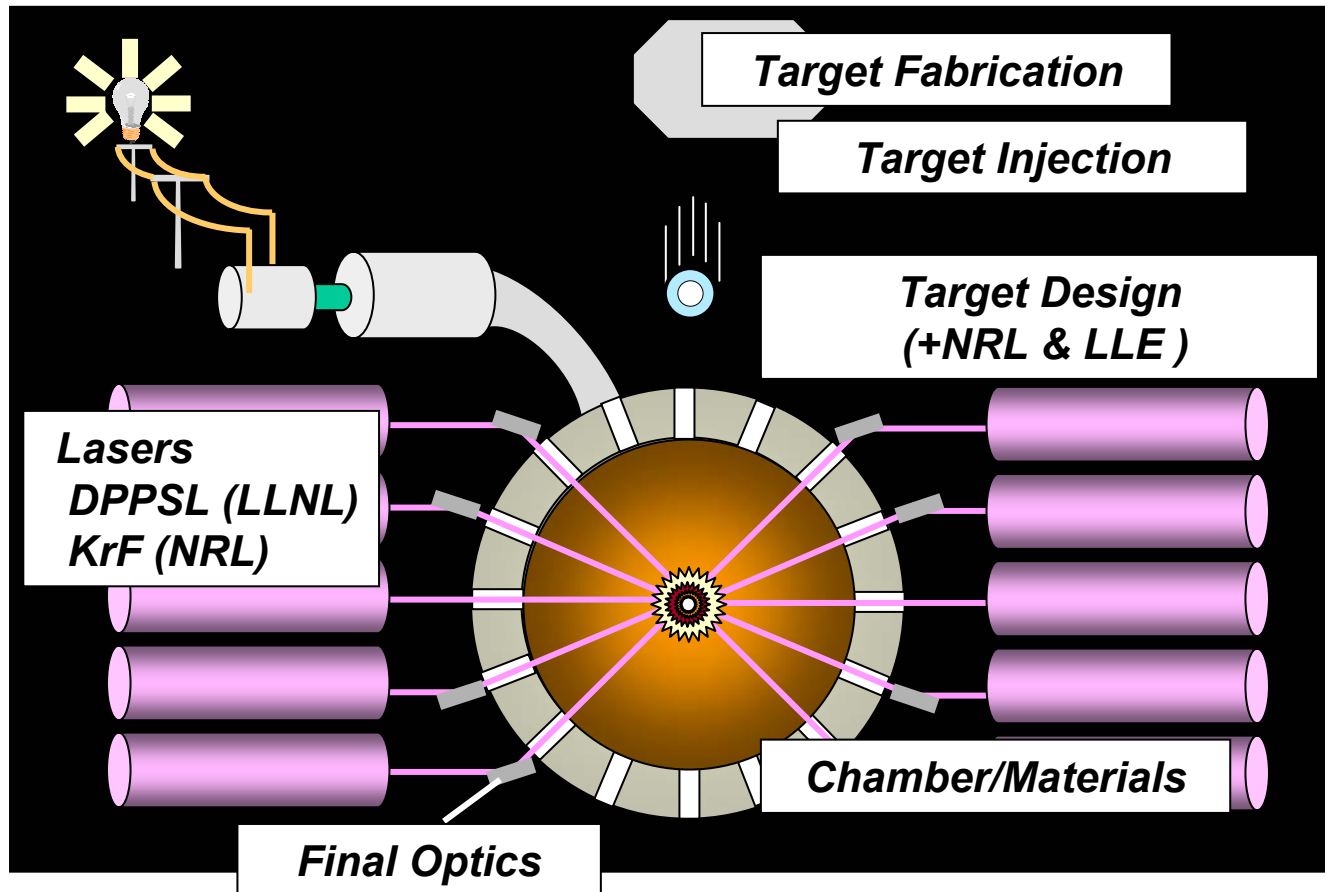
## •Reduced risk and cost of development:

- Laser made of identical beam lines

## •Substantial technical progress since program started 4 years ago

The fastest, least expensive and least risky approach to develop fusion energy:

Develop the key science and technologies together, using the end goal of a practical power source as a guide



# The High Average Power Laser (HAPL) Program:

*An integrated program to develop the science and technology for  
Laser Fusion Energy*

**6 Government labs, 9 Universities, 13 Industries**



## Government Labs

1. NRL
2. LLNL
3. SNL
4. LANL
5. ORNL
6. **PPPL**



## Universities

1. UCSD
2. Wisconsin
3. Georgia Tech
4. UCLA
5. U Rochester, LLE
6. PPPL
7. UC Santa Barbara
8. U North Carolina
9. UC Berkeley

## Industry

1. General Atomics
2. Titan/PSD
3. Schafer Corp
4. SAIC
5. Commonwealth Tech
6. Coherent
7. Onyx
8. DEI
9. Mission Research Corp
10. Northrup
11. Ultramet, Inc
12. Plasma Processes, Inc
13. Optiswitch Technology

# TARGET PHYSICS



# Inertial Fusion Energy (IFE) with Lasers

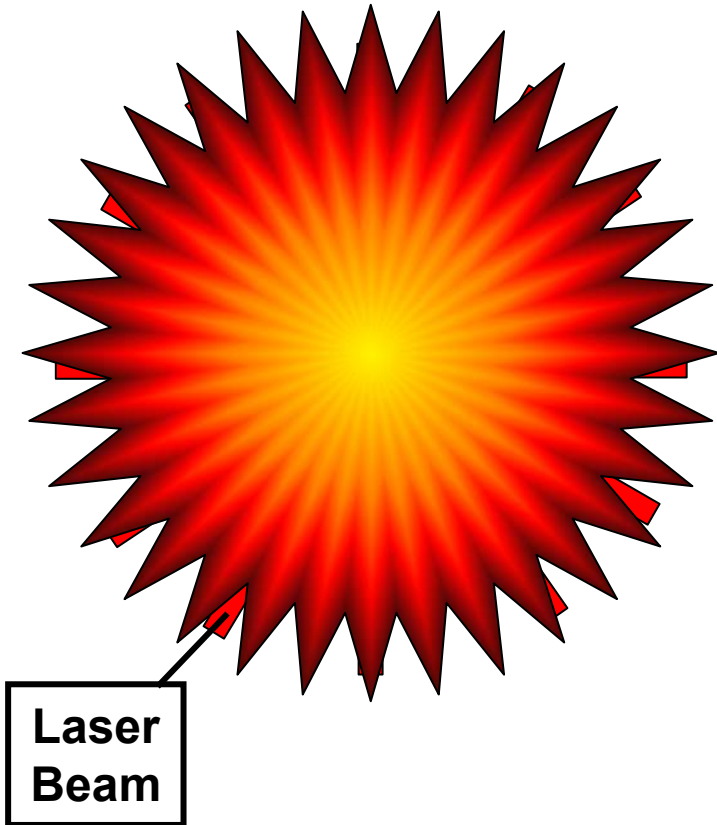
1. An array of laser beams symmetrically illuminate a spherical shell of DT fuel

2. Lasers *ablate* outer layer of pellet. Ablated material expands outward

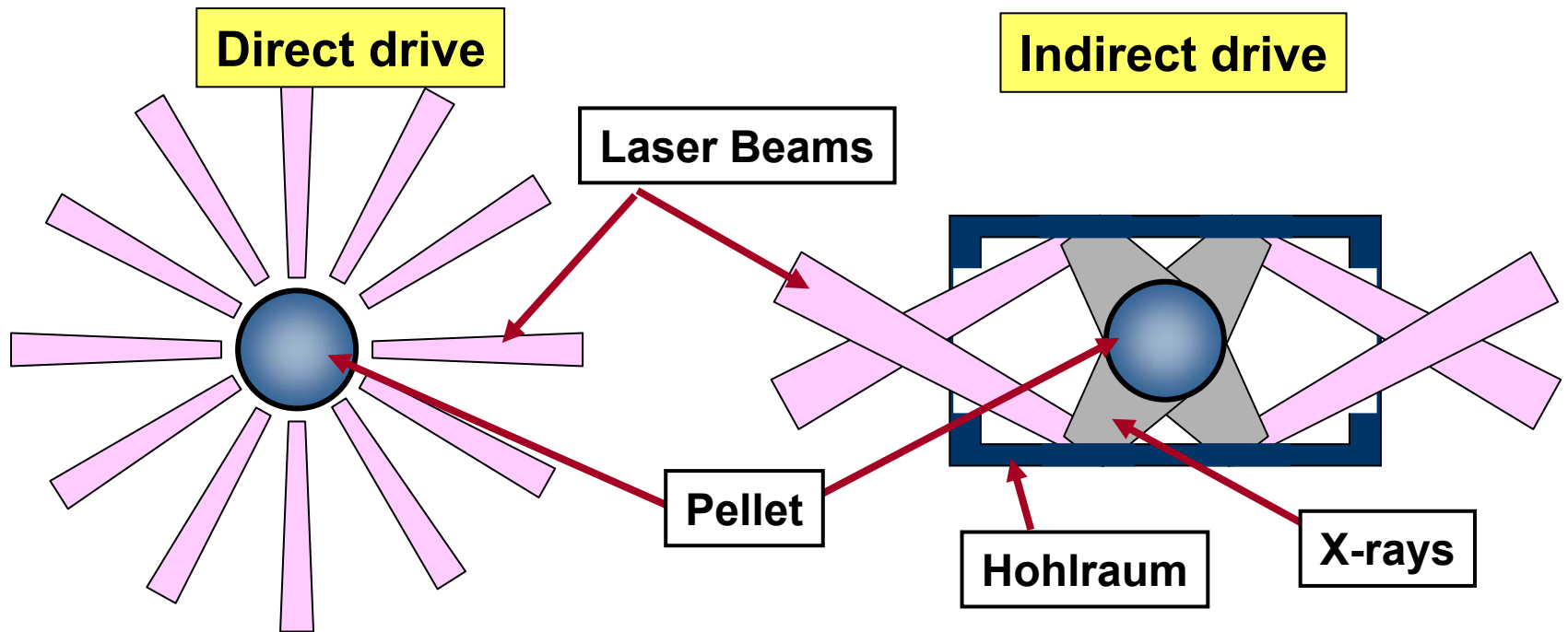
3. Core driven inward by rocket effect  
Compressed to very high density  
(1000 x solid)

4. Localized "hot spot" ignites

5. Fusion burn propagates through fuel



# Why we like direct drive for laser fusion



**Physics is simpler --key issue is hydrodynamic stability**

**Higher efficiency --better coupling of laser to fuel**

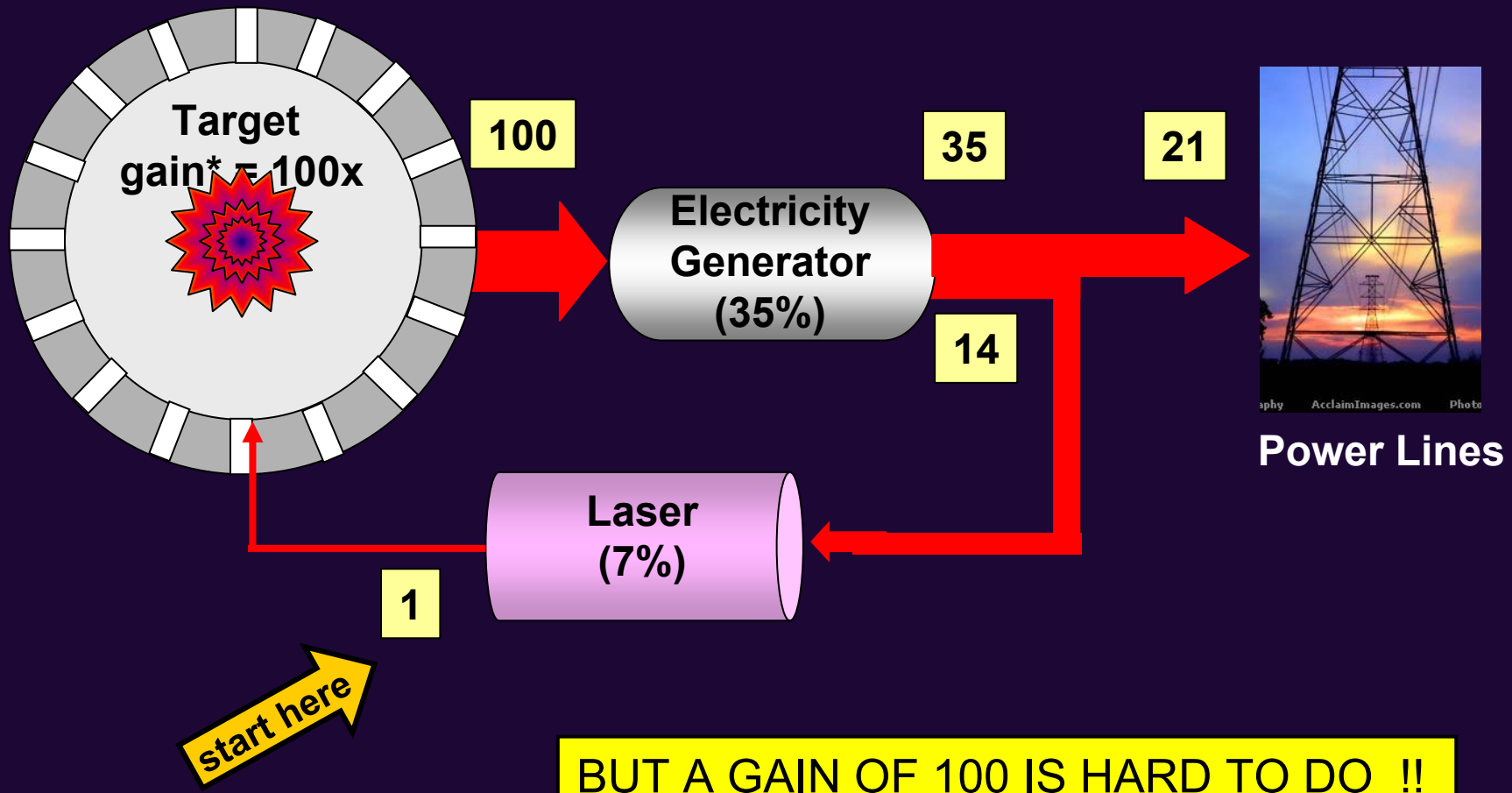
**Targets relatively simple (cheap) to fabricate**

**No preferred illumination direction**

**Simpler operational issues: no hohlraum debris to recycle**

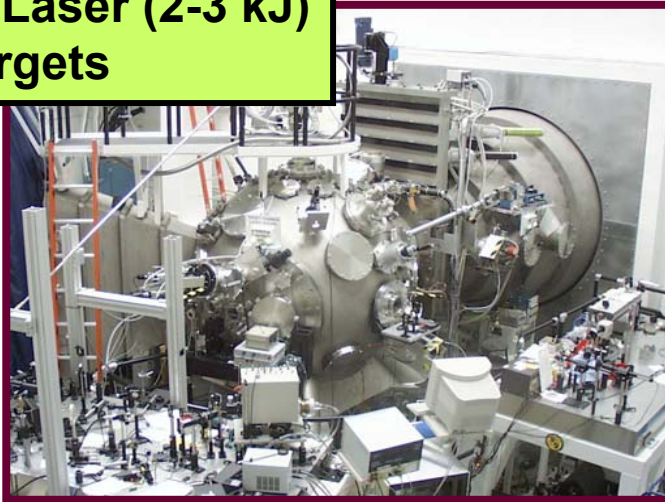
The target has to make enough energy  
to run the power plant  
*and*  
have enough left over to produce electricity

A Target "Gain" of  $> 100 \times$  should be sufficient\*

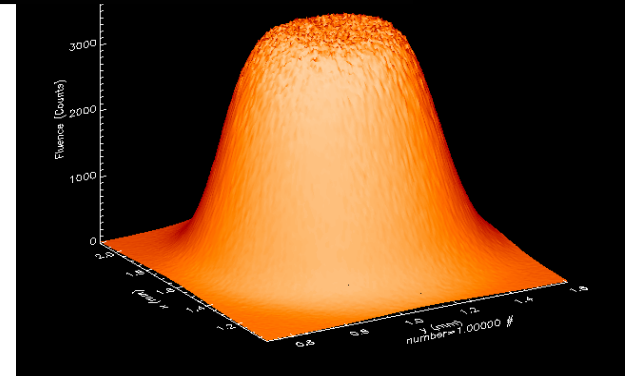


# NRL Nike Program has the proper tools to develop and evaluate the physics of high gain target designs

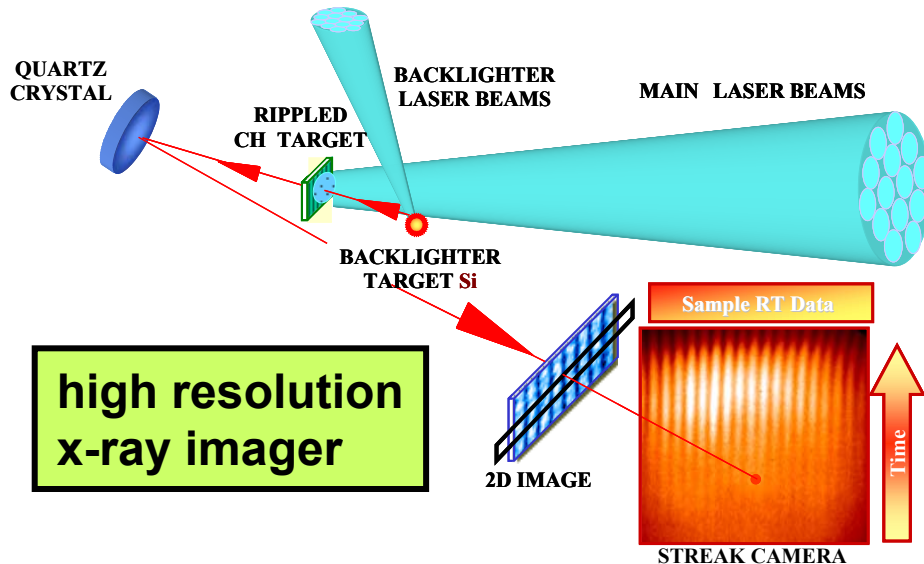
**Nike KrF Laser (2-3 kJ)  
Planar targets**



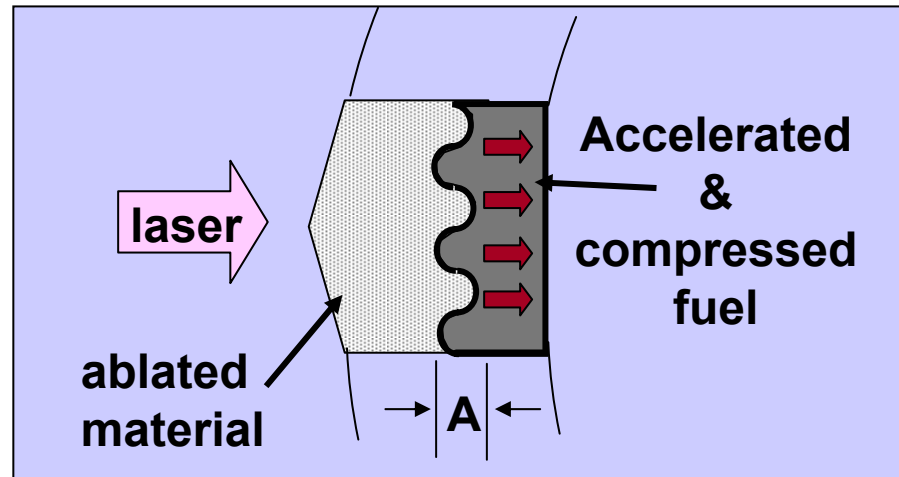
**Ultra uniform laser profile  
0.3 - 1.3% non-uniformity**



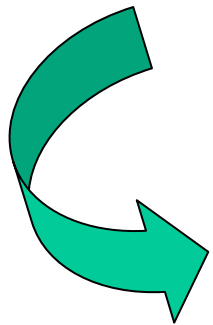
**2 "self built" 256-Processor super-computers allow high resolution simulations of pellet implosions**



# High Gain Direct drive requires control of Rayleigh Taylor Instability: Need to minimize both the initial mass modulations and the growth rate



Amplitude of mass modulations



$$A(t) = A_0 e^{\gamma t}$$

Rayleigh Taylor growth factor

**STEP #1:**

*a. Raise Isentrope (lower the density) of the ablator*

Initial mass modulation

Laser non-uniformities

Target non-uniformities

**STEP #2:**

*a. Use a Smooth Laser Beam*

*b. Reduce Laser Imprinting*

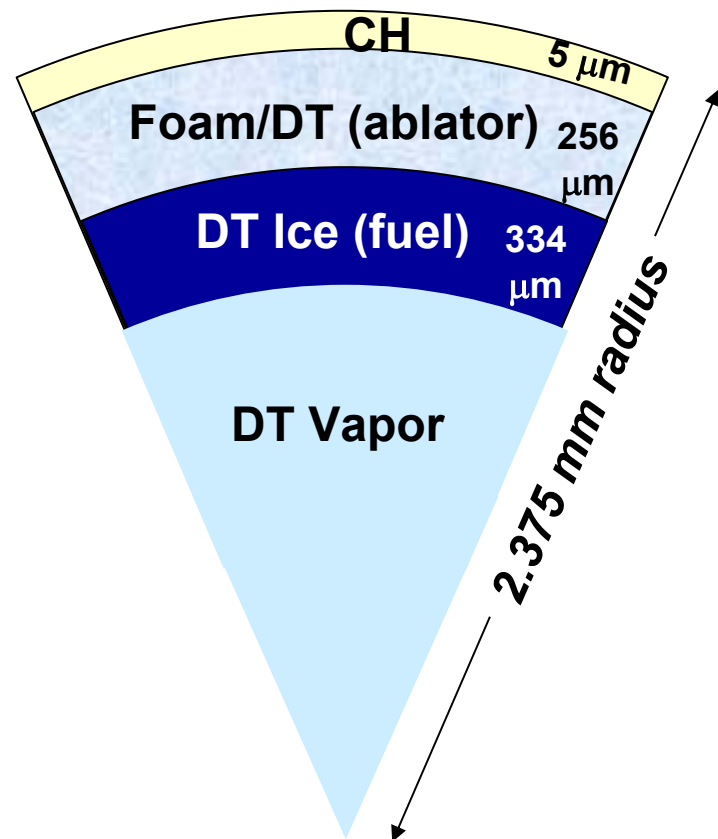
*c. Make target outer surface smooth*

# Current high gain target designs: Ablator: DT+ Foam Fuel: Pure DT

Sector of Spherical  
Target  
(NRL Design)

This design is very flexible.  
It can (and has been) modified to  
meet the requirements for a  
power plant:

- Fabrication
- Injection- acceleration
- Injection- survival
- Emissions
- Recycling



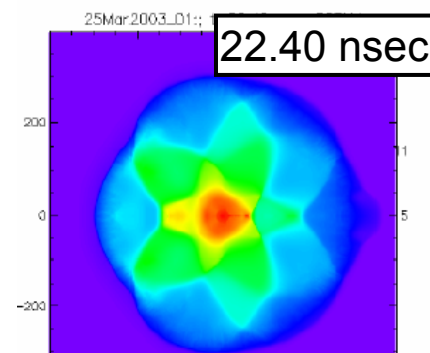
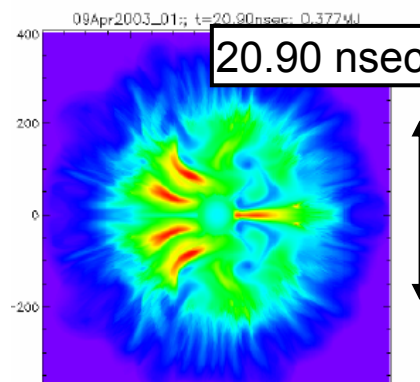
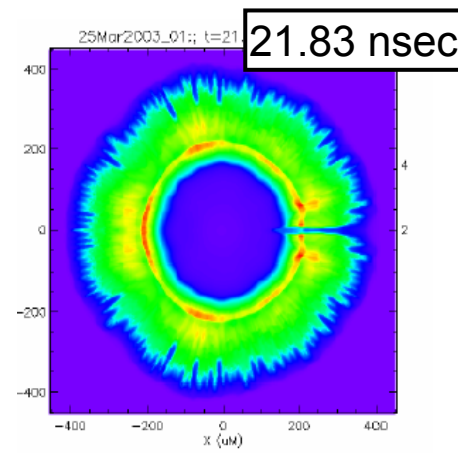
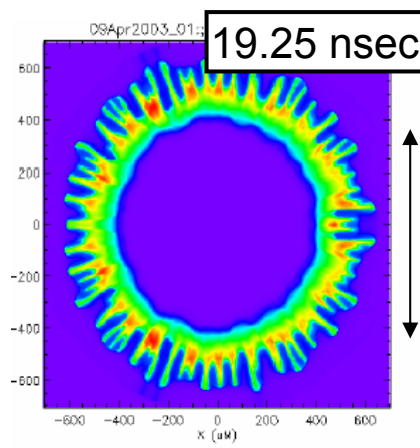
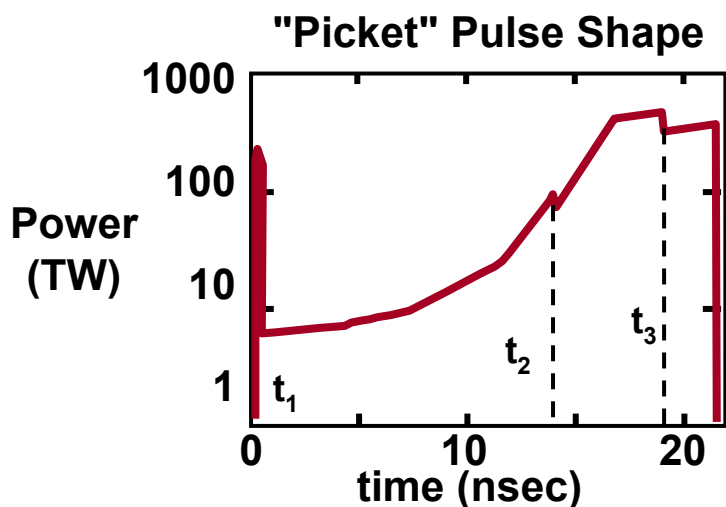
# Target gains > 160 are predicted with 2D computer simulations

NRL FAST CODE: high precision 2D calculations that include all relevant modes and non-uniformities in the target and laser

Laser = 2.5 MJ

No Picket

With Picket

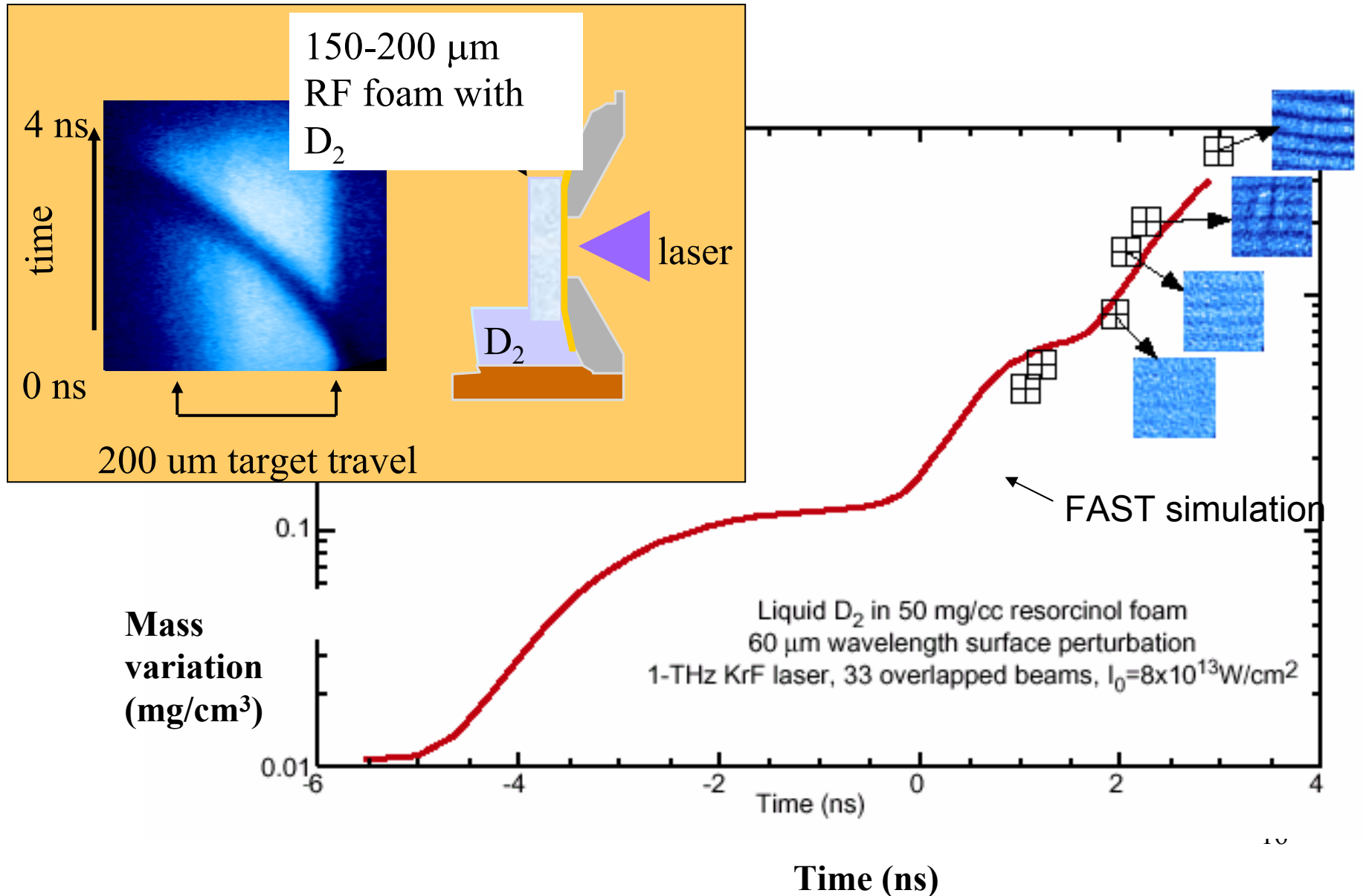


GAIN = 0.5 ☹️

GAIN = 160 😊

Similar predictions from  
University of Rochester, LLE  
and  
Lawrence Livermore National Lab

# NRL target physics codes (aka FAST) have been benchmarked with experiments on Nike Laser





# The Laser

# What do we need for a Fusion Laser?

Can be repetitively pulsed ( $\sim 5$  pulses/second)  
(means you have to be able to cool it easily)

Capable of High Energy per pulse ( $\sim 50,000$  Joules)

Short pulse length (4-8 nsec)

Very smooth laser beam (minimize  $A_0$ , seed for instability)

Ultra-violet (UV) wavelength (minimizes instabilities, maximizes coupling)

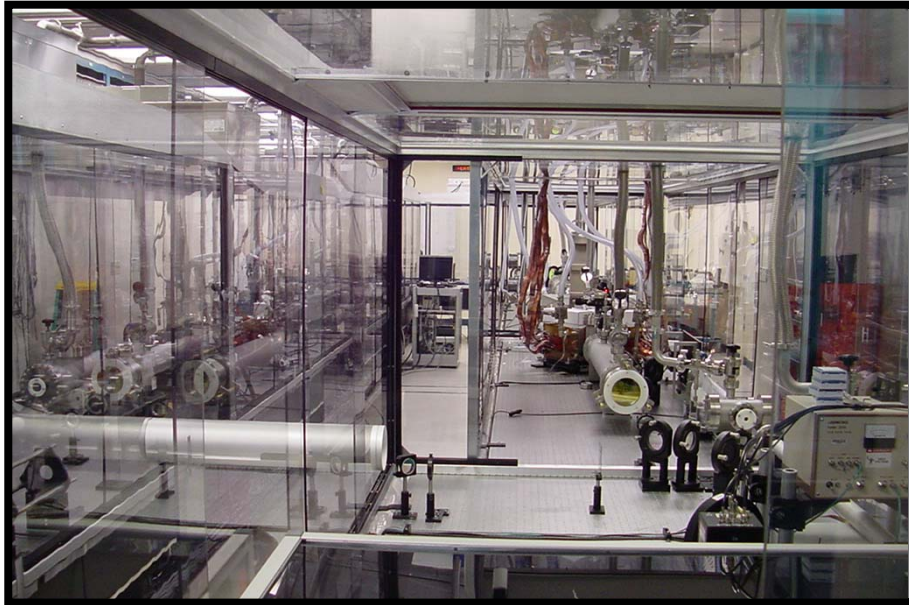
Low cost technology

Efficient ( $> 6\%$  total)

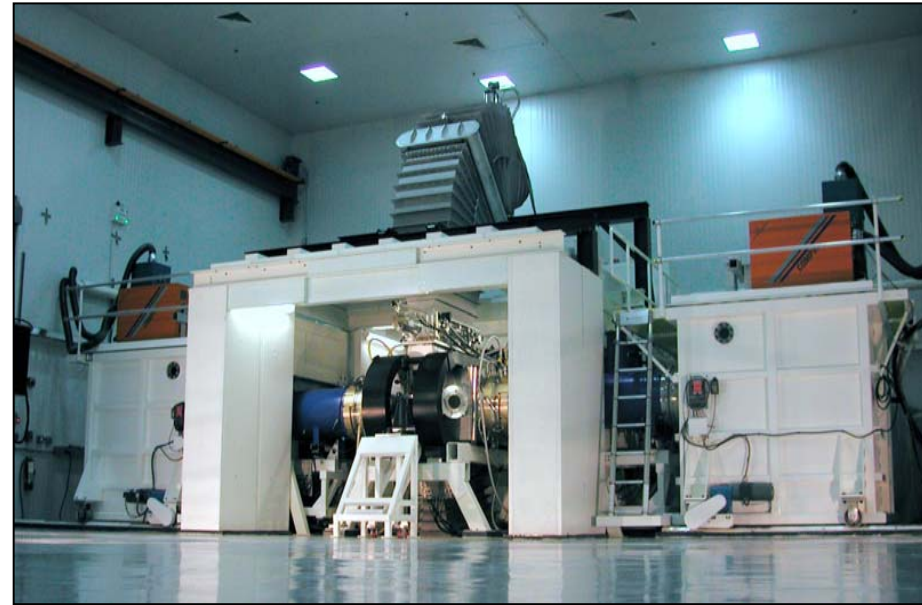
Robust & Durable (2 years = 300,000,000 shots)

# Two types of lasers are being developed for IFE:

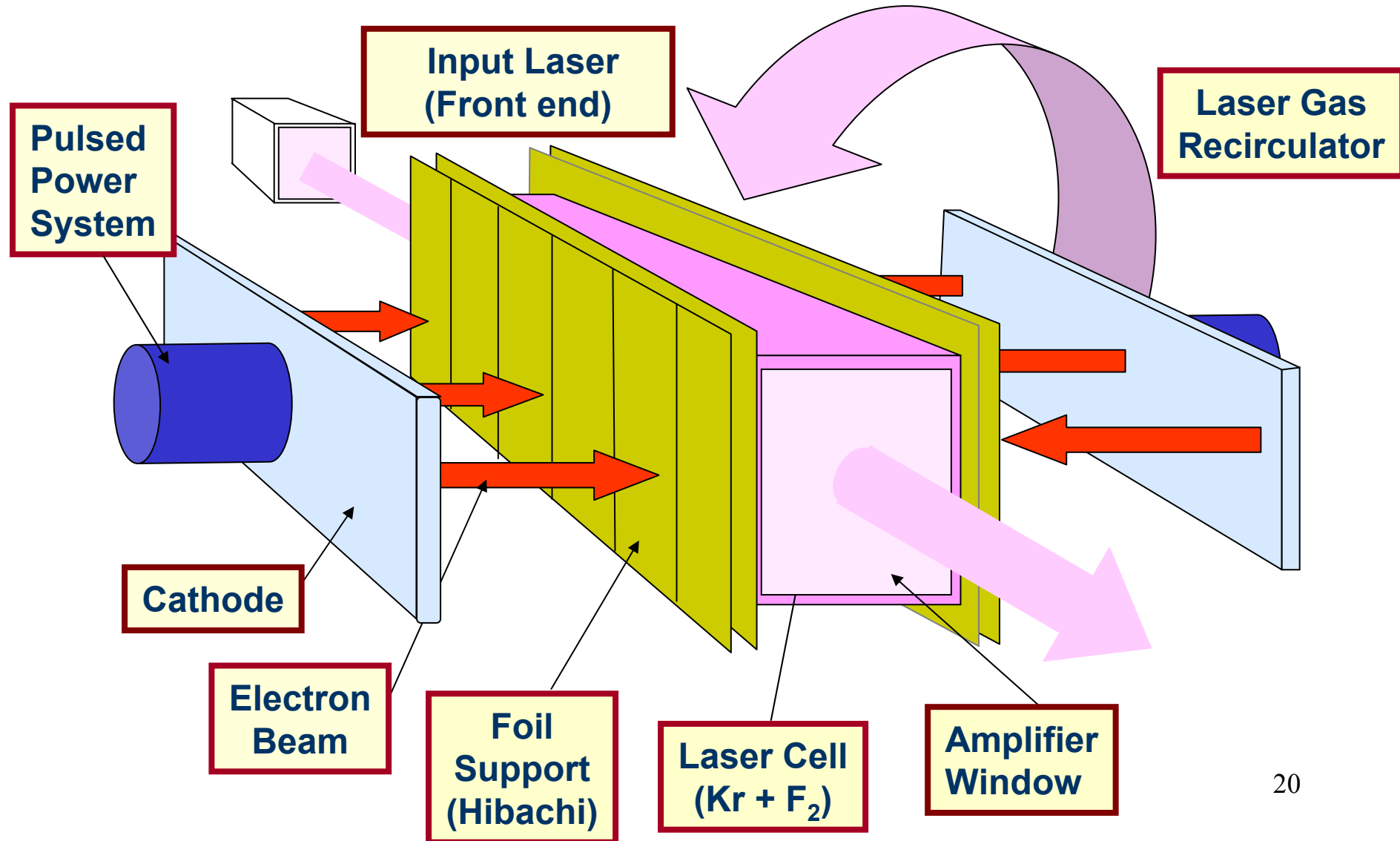
***DPSSL (Mercury-LLNL)  
Diode pumped solid state laser***



***KrF Laser (Electra-NRL):  
electron beam pumped gas laser***



# Key Components of an electron-beam pumped KrF Laser



# The advantages of a KrF laser

Can be repetitively pulsed (~ 5 pulses/second)

Capable of High Energy per pulse (~50,000 Joules)

Short pulse length ( 4-8 nsec)

Very smooth laser beam (minimize  $A_0$ , seed for instability)

Ultra-violet (UV) wavelength (minimizes instabilities, maximizes coupling)

Low cost technology (Industrial, pulsed power technology)

Efficient (> 6% total) (Predict 7%, based on recent R&D)

**Robust & Durable** (Good progress)

# The key issues for KrF are being addressed with the Electra and Nike Lasers at NRL

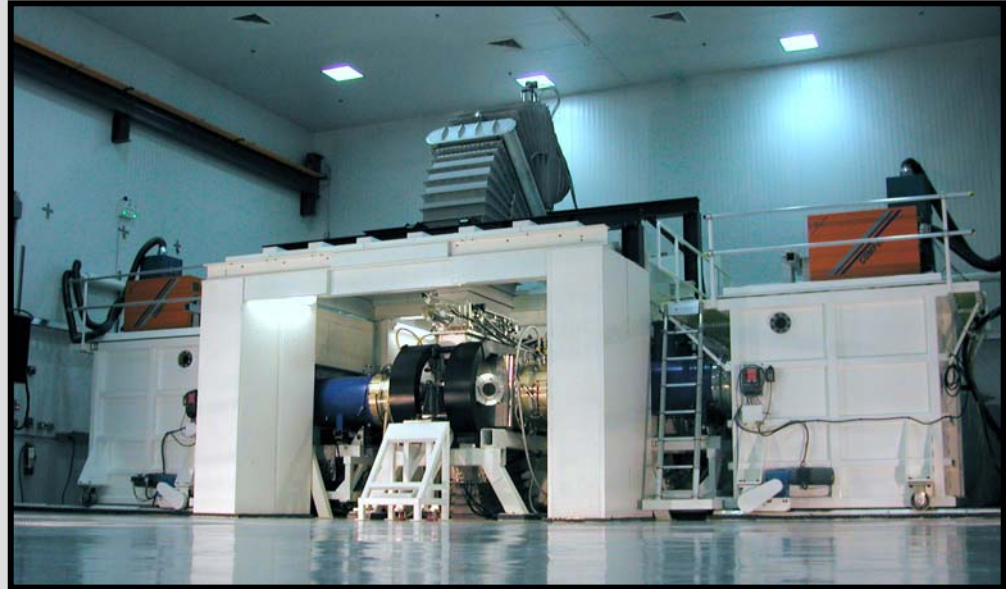


## Electra:

400-700 J laser light  
500 keV/100 kA/100 nsec  
up to 5 Hz

*Develop technologies for:*

*Rep-Rate,  
Durability,  
Efficiency,  
Cost*



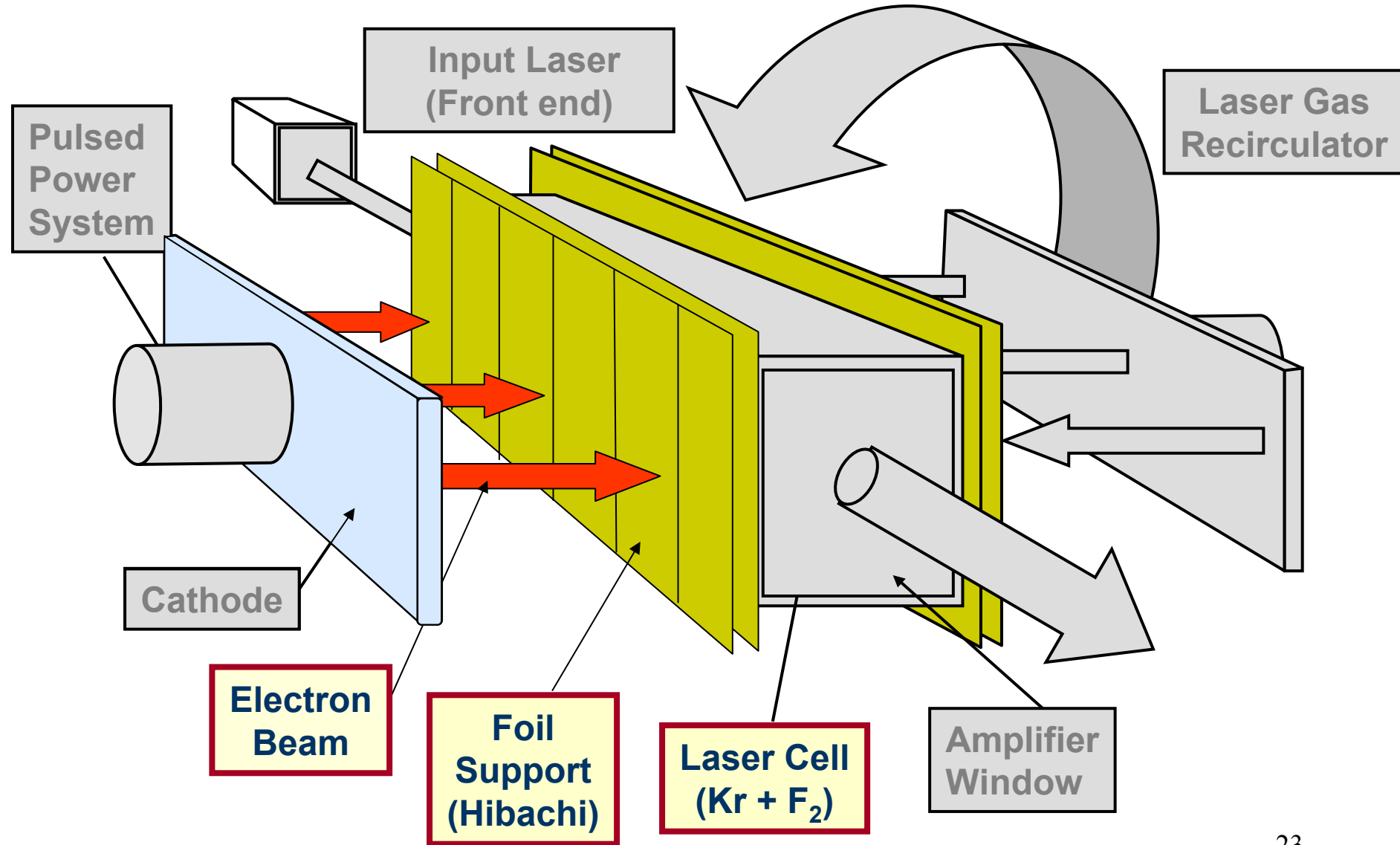
## Nike:

3-5 kJ laser light  
750 keV, 500 kA, 240 nsec  
single shot

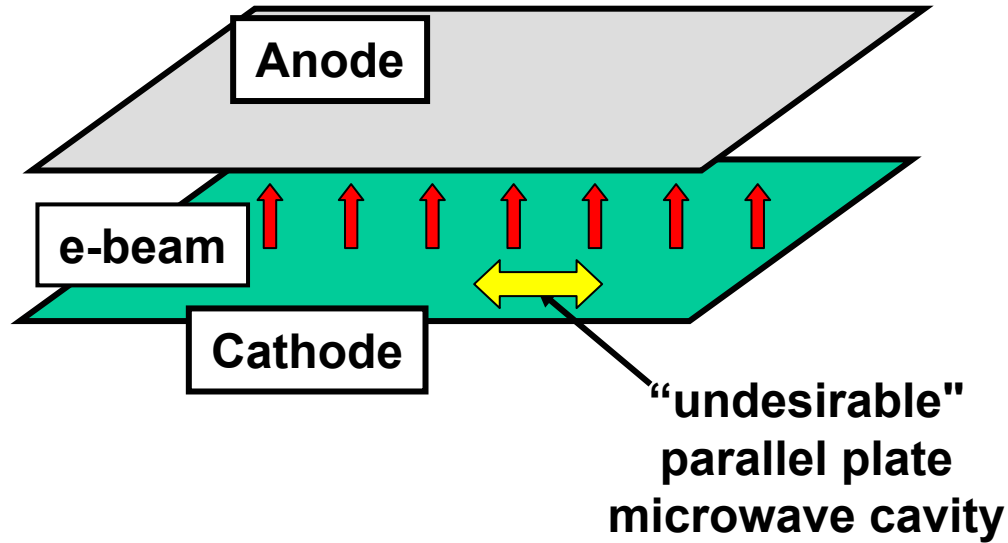
*E-beam physics on full scale diode  
Laser-target physics*



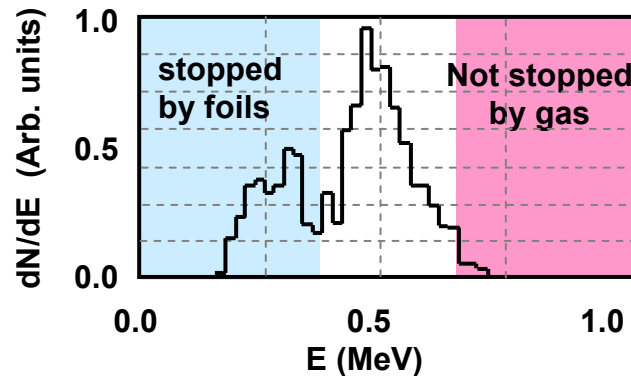
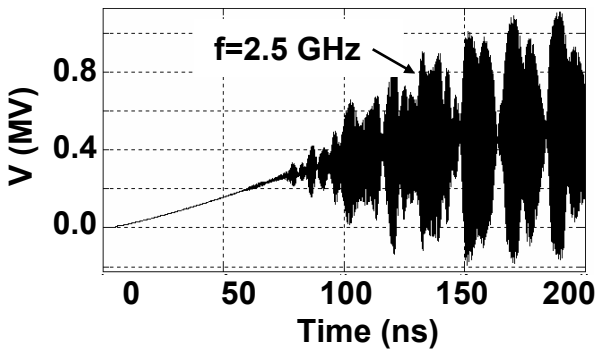
# The electron beam, hibachi, and KrF physics



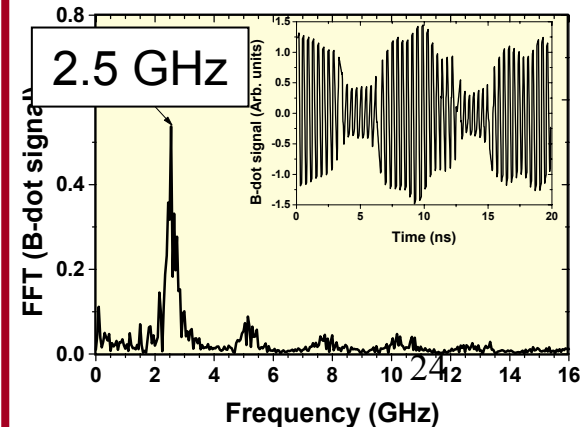
# Experiments and 2-D models show "Transit Time" Instability in large area, low impedance diodes



## Theory



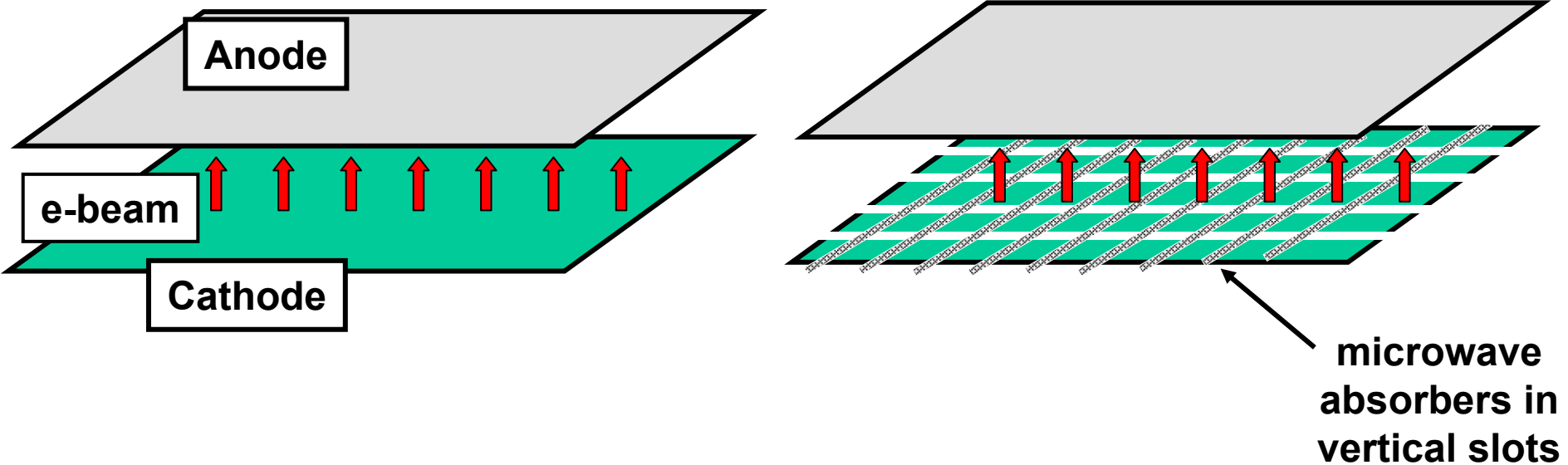
## Experiment (Nike)



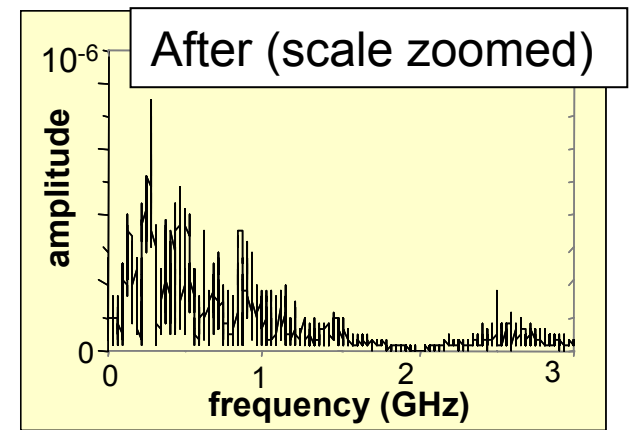
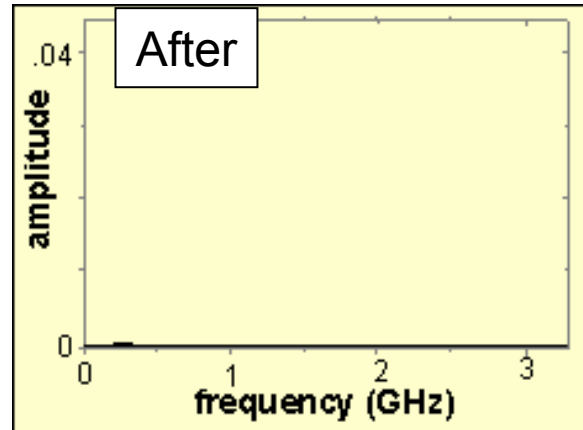
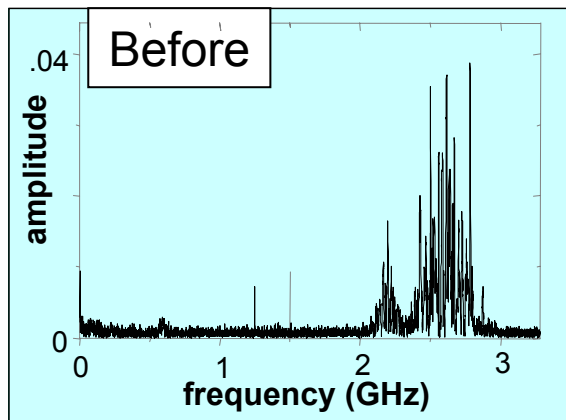


# *In accordance with theory, slotting the cathode and adding microwave absorbers eliminates the instability*

---



**Experimental Fast Fourier transform of instability amplitude:**



# The Hibachi

---

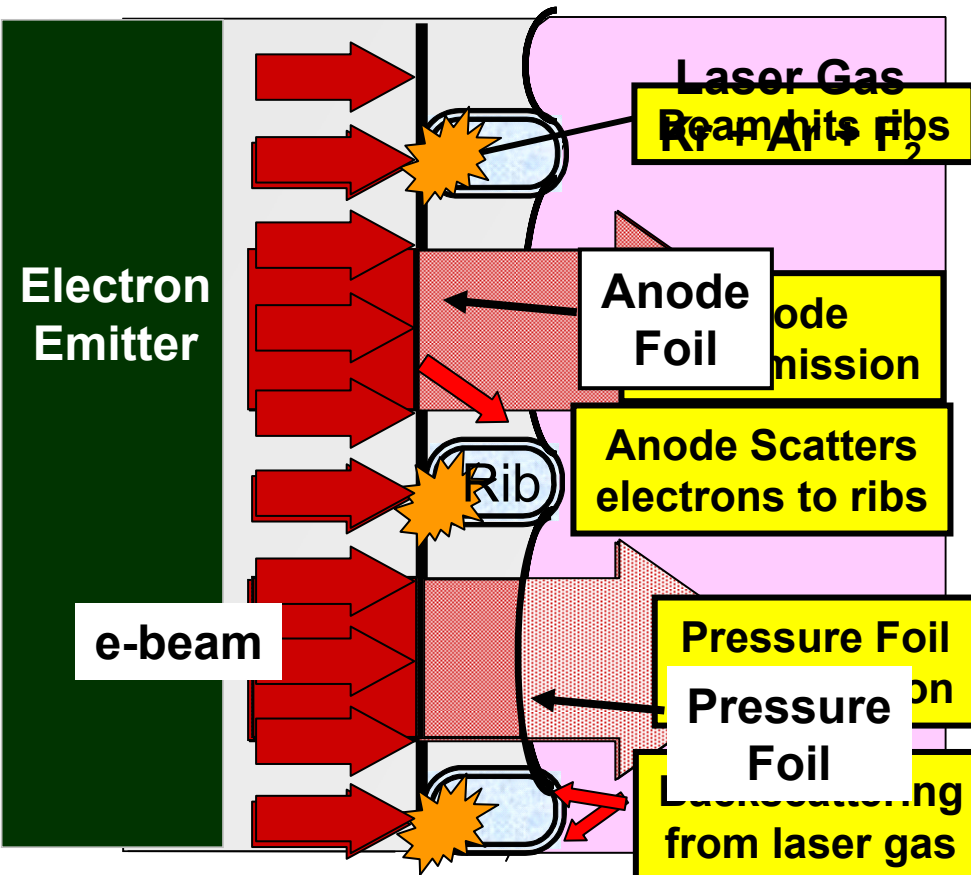
.001" thick  
Stainless Steel Foil



Ribs  
(contain water  
cooling channels)

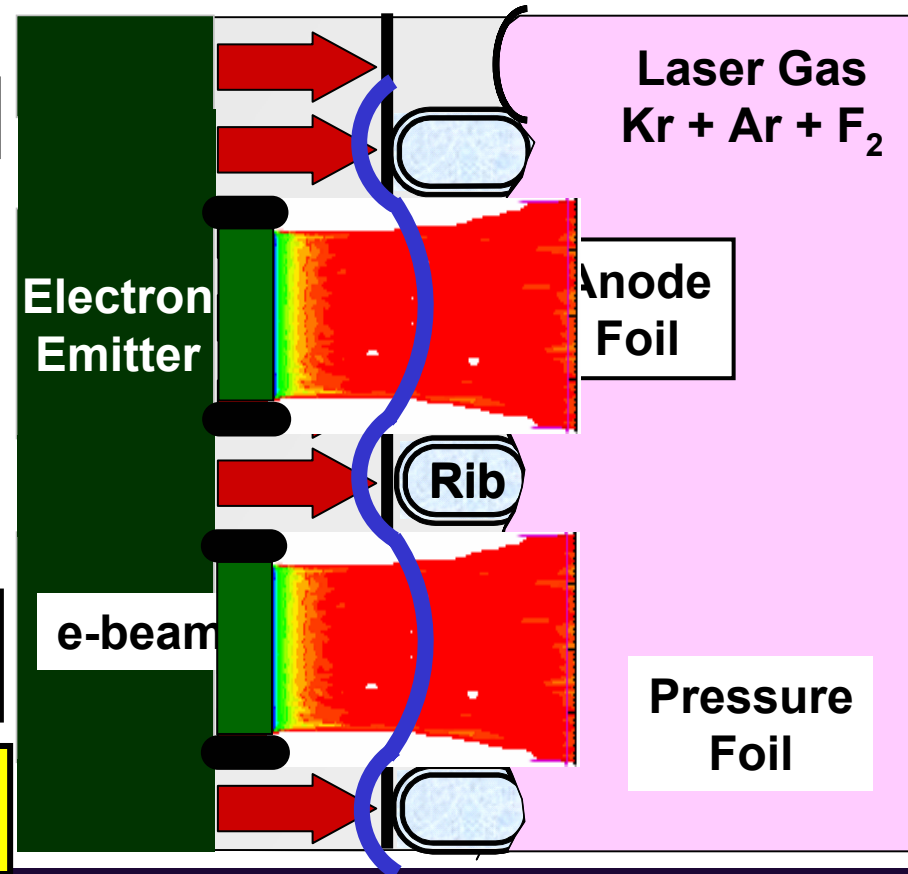
# We have increased the electron beam energy into the gas by eliminating the anode & patterning the electron beam

BEFORE



• 35% e-beam energy into gas

AFTER

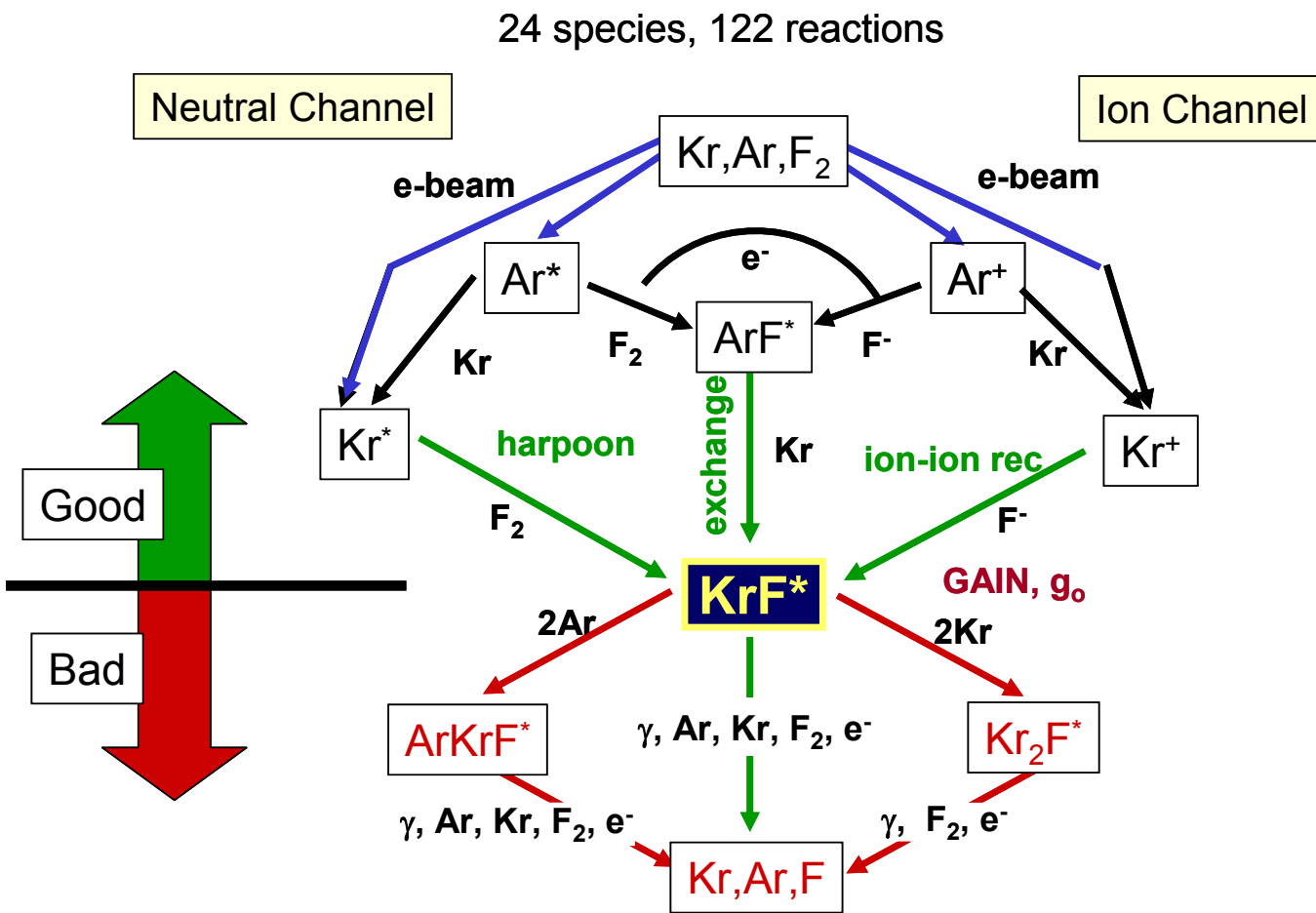


- 75% e-beam energy into gas
- Agrees with LSP models by MRC
- Expect ~ 82% @ 1,000 keV (IFE)

# Orestes KrF Physics Code combines relevant physics into a single "first principles" code

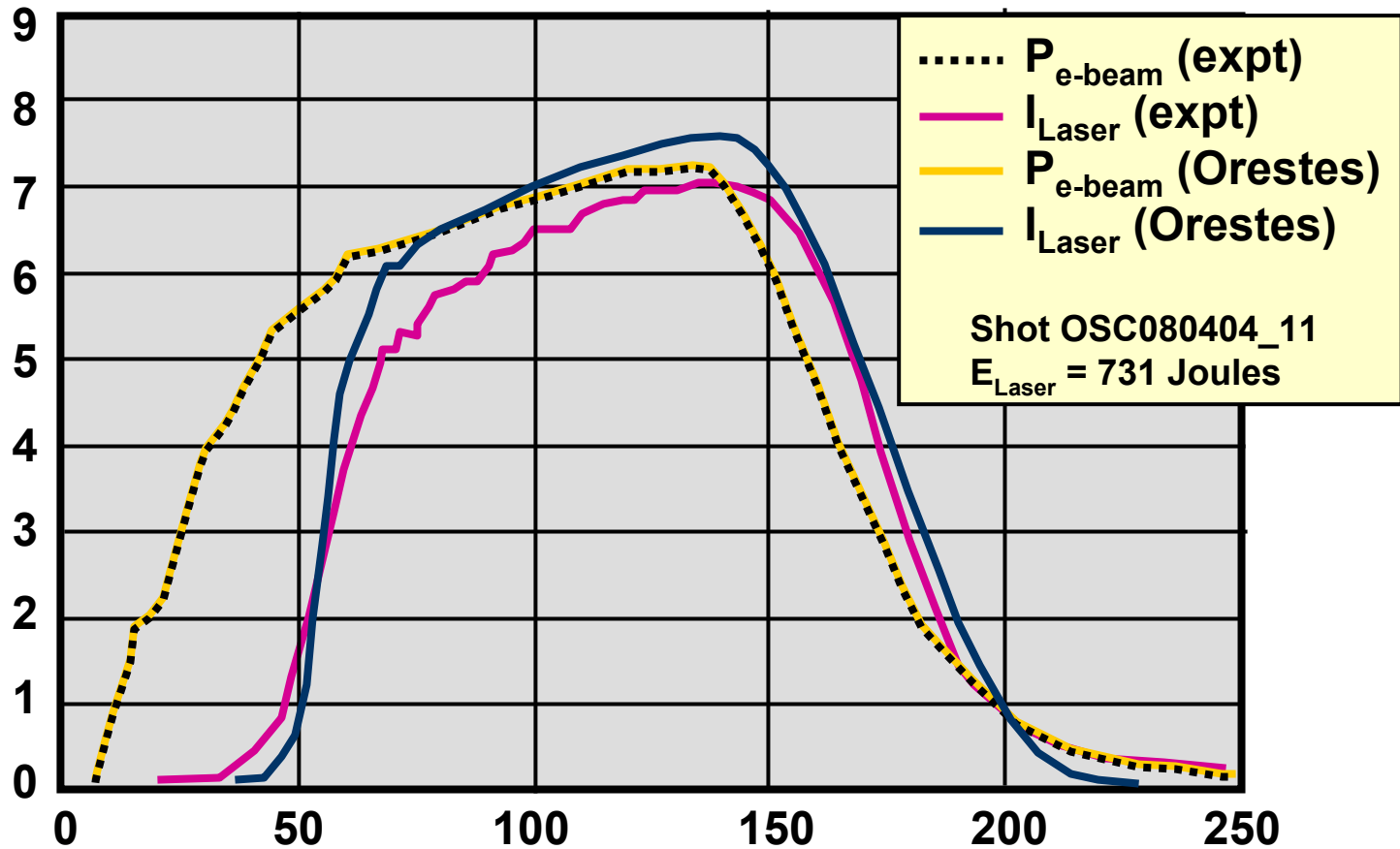
*Electron Deposition  
Laser Transport*

*Plasma Chemistry  
Amplified Spontaneous Emission*

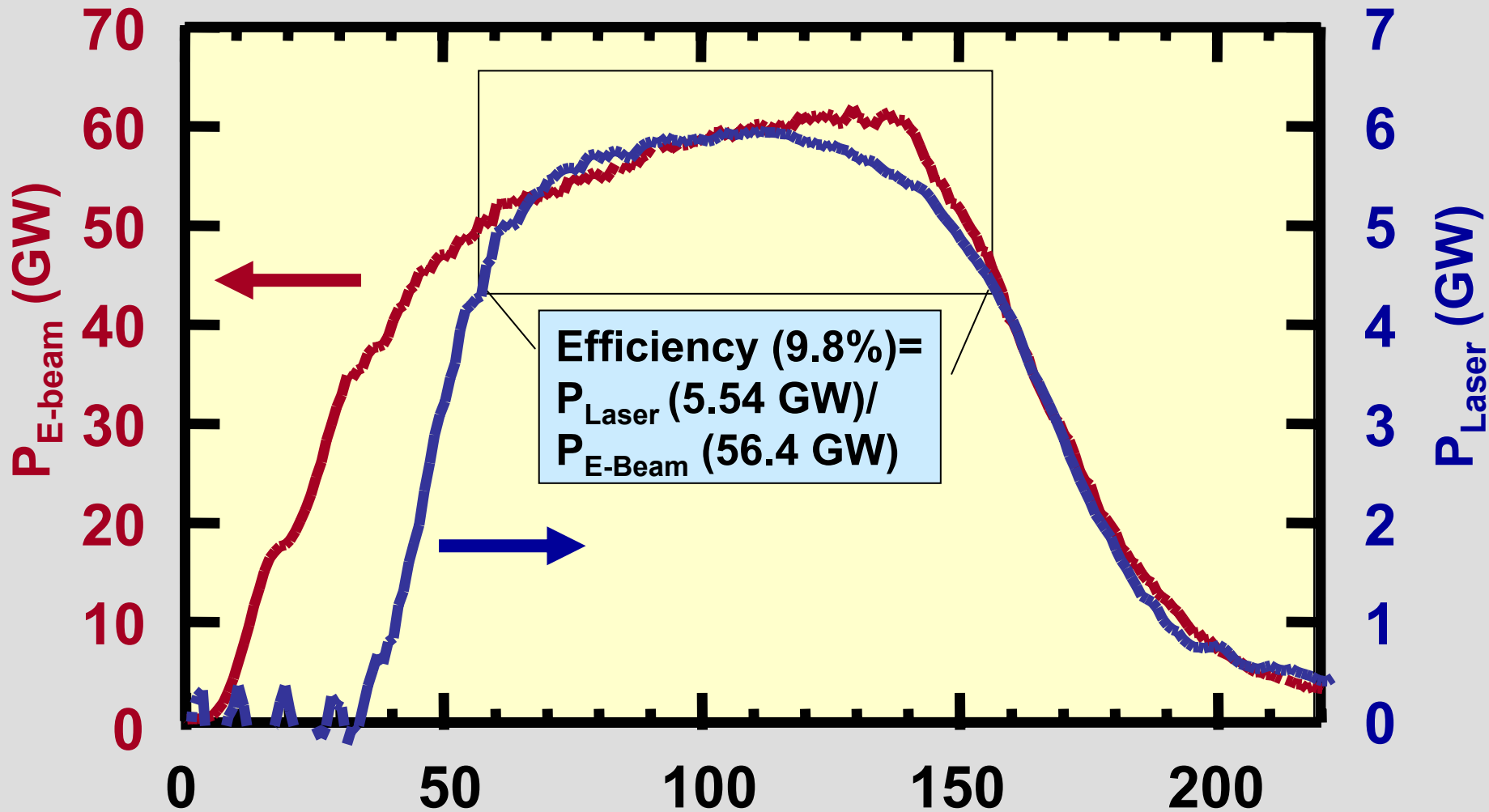


absorption,  $\sigma = \sigma_{F_2} \eta_{F_2} + \sigma_{F^-} \eta_{F^-} + \sigma_{KrF_2} \eta_{KrF_2} + \sigma_{ArF_2} \eta_{ArF_2}$

# Orestes becomes Electra



Electra: ~ 10% intrinsic efficiency as an oscillator  
...expect ~ 11 % as an amplifier



Why 11% as an amplifier?

KrF grade windows with AR coating  
Amplification from input laser

***Based on our research, an IFE-sized KrF system is projected to have a wall plug efficiency of > 7% (meets goal)***

|                                |                                |             |
|--------------------------------|--------------------------------|-------------|
| <b>Pulsed Power</b>            | <b>Advanced Switch</b>         | <b>87%</b>  |
| <b>Hibachi Structure</b>       | <b>No Anode, Pattern Beam</b>  | <b>82%</b>  |
| <b>KrF</b>                     | <b>Based on Electra exp'ts</b> | <b>11%</b>  |
| <b>Optical train to target</b> | <b>Estimate</b>                | <b>95%</b>  |
| <b>Ancillaries</b>             | <b>Pumps, recirculator</b>     | <b>95%</b>  |
| <b>Total</b>                   |                                | <b>7.1%</b> |

**> 6 % is adequate for fusion target gains > 100...  
...and latest designs have 2D gains ~ 160**



# We are developing three techniques to cool the foil

- **Convection cooling by the laser gas**

**Pro: Successful operation @ 1 Hz (foil temp < 200°C)**

**Con: Foil temperature rises to 350-500°C @ 5 Hz operation**

- **Conduction cooling to hibachi ribs**

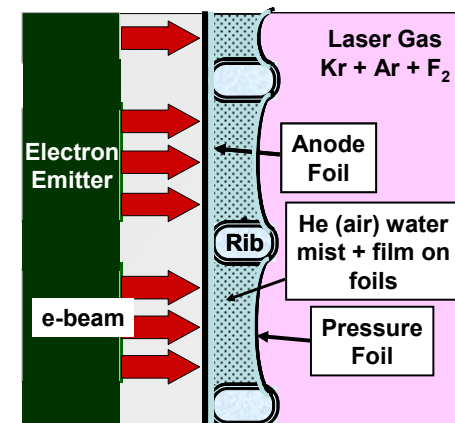
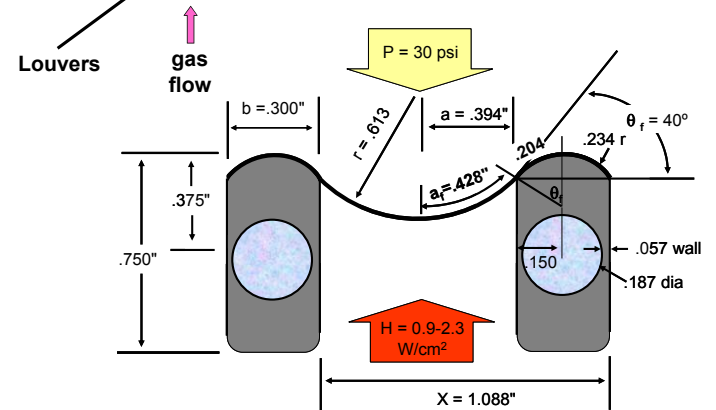
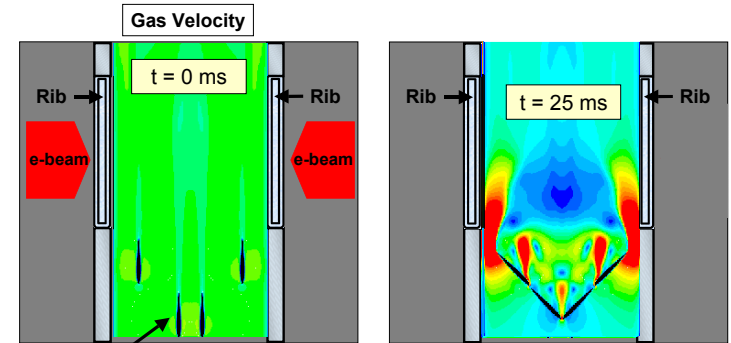
**Pro: Simple, efficient cooling system**

**Con: Requires close rib spacing which challenges e-beam transport through hibachi (may be reduced with advanced materials)**

- **Mist cooling of the foil (developed by Georgia Tech)**

**Pro: Successful demonstration @5 Hz (foil temp < 140°C)**

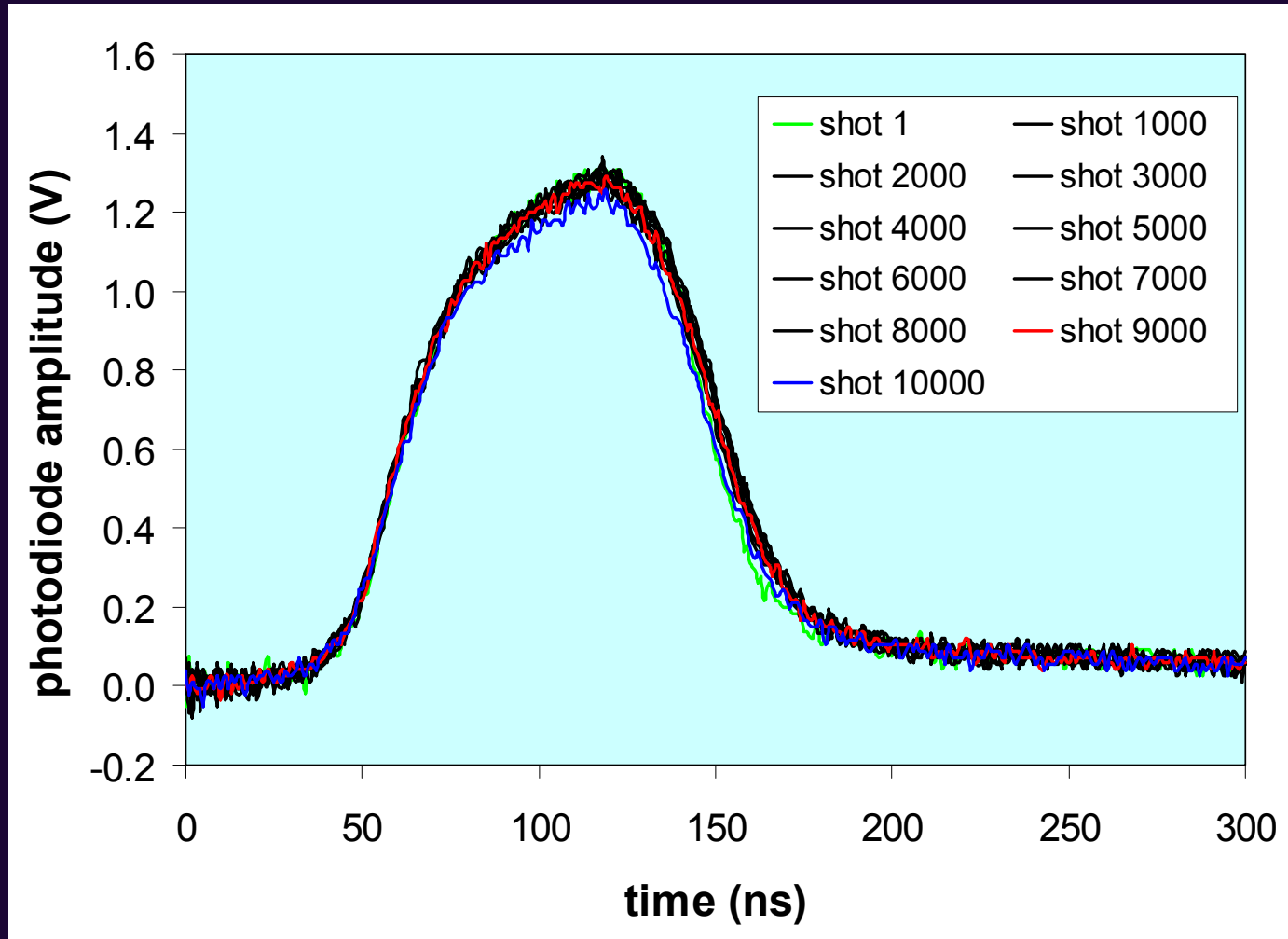
**Con: More complex system, lowers e-beam transport efficiency (to ~77%)**





# Electra as a repetitively pulsed laser:

300 J/pulse @ 1 shot/second in a 10,000 second run (2 hrs, 45 min)



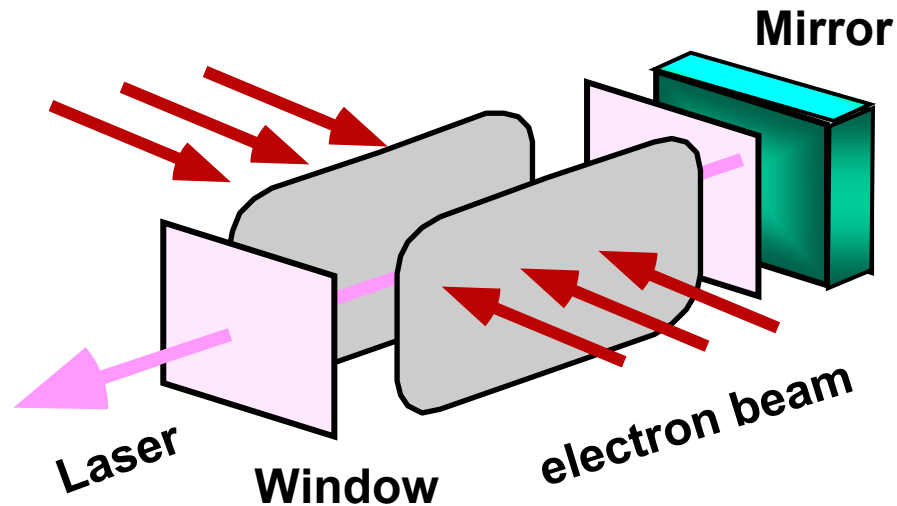
Also: 700 J/shot @ 1 shot/second (700 W) in 400 second bursts

400 J/pulse @ 5 shots/second (2,000 W) in 100 second bursts

**Electra produces 700 Joules.  
For Fusion we need 2,400,000 Joules  
How do we get there from here?**

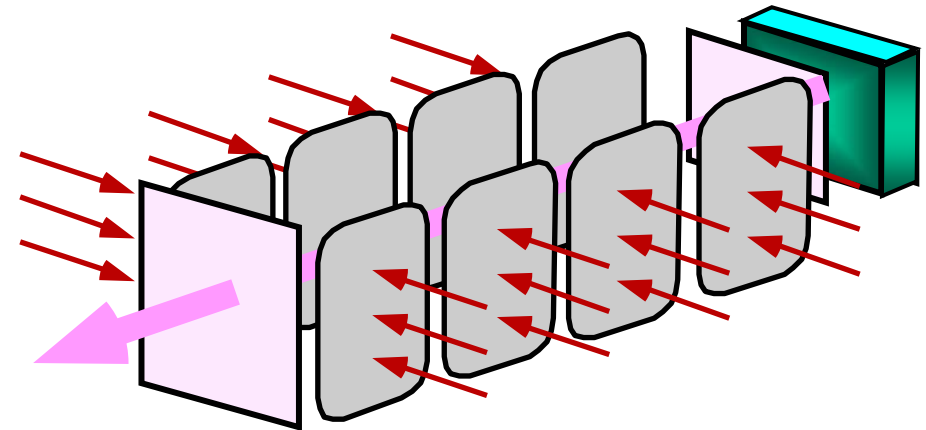
**WHERE WE ARE NOW.....**

**Electra - 700 J output**



**WHERE WE WANT TO BE....**

**IFE-sized Amplifier- 50,000 J output**



**Two electron -beams:  
500 keV, 100 kA, 140 nsec  
30 cm x 100 cm each beam**

**Eight electron - beams:  
1000 keV, 175 kA, 400 nsec  
50 cm x 100 cm each beam**

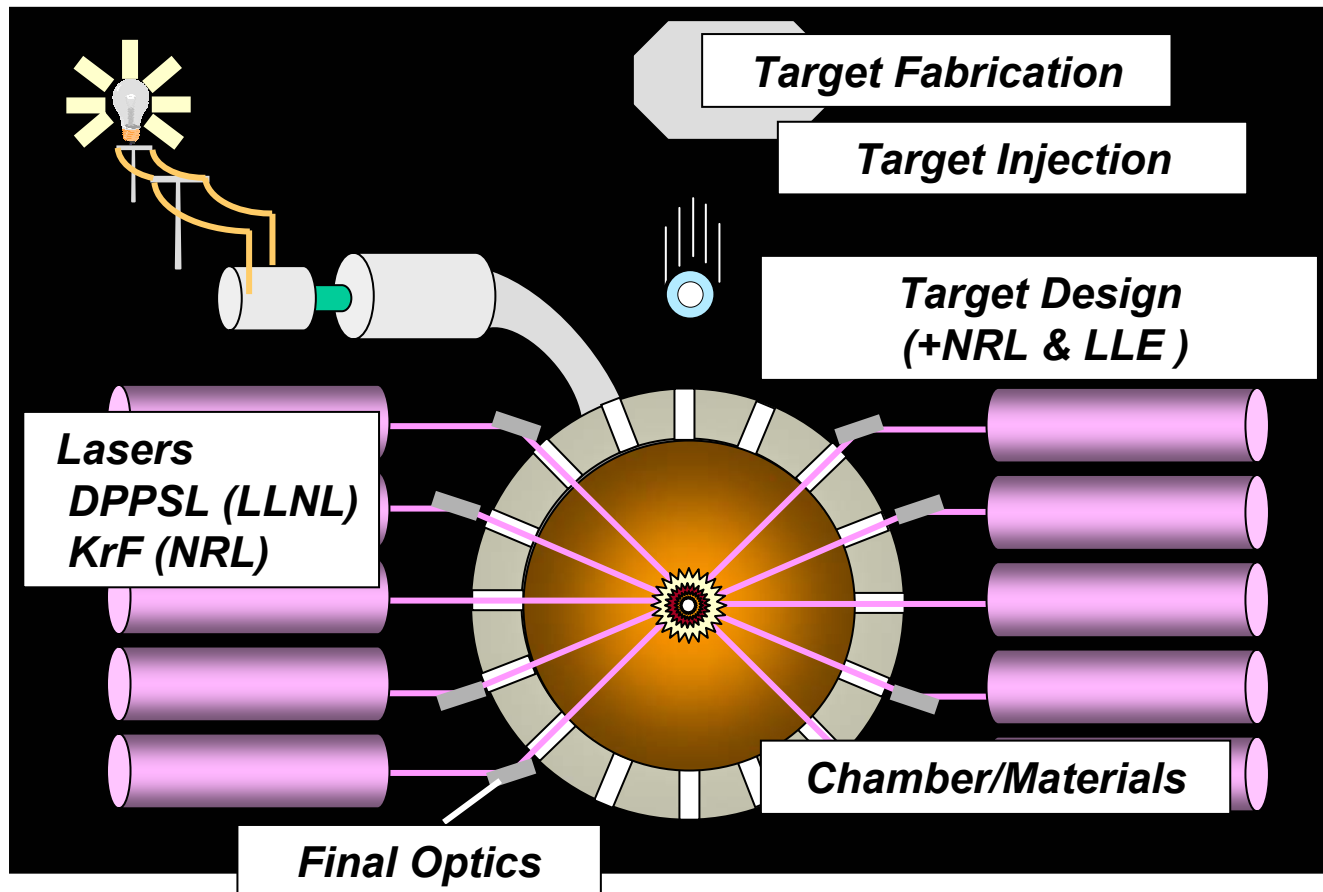
# The other principal components:

Optics

Target Fabrication

Target Injection

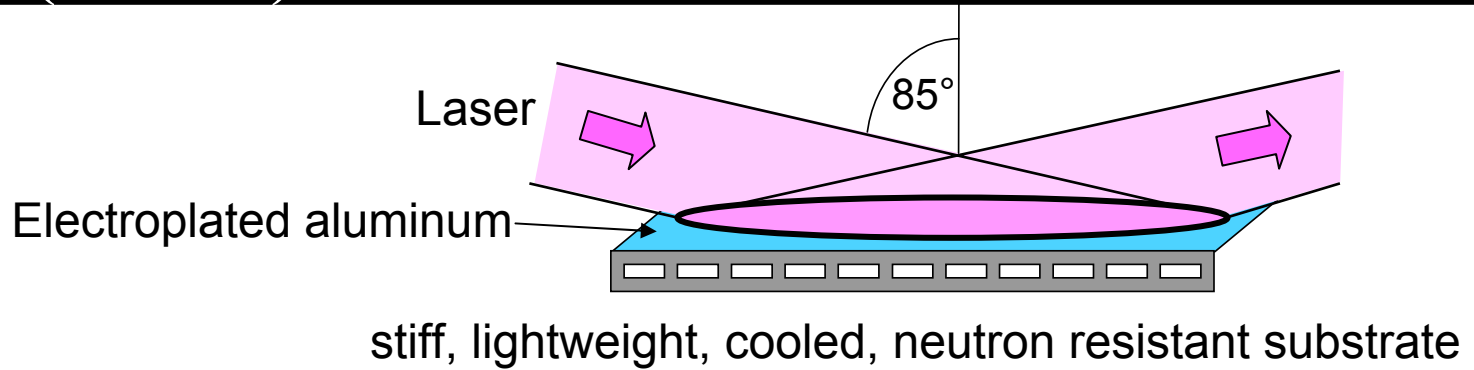
The First Wall



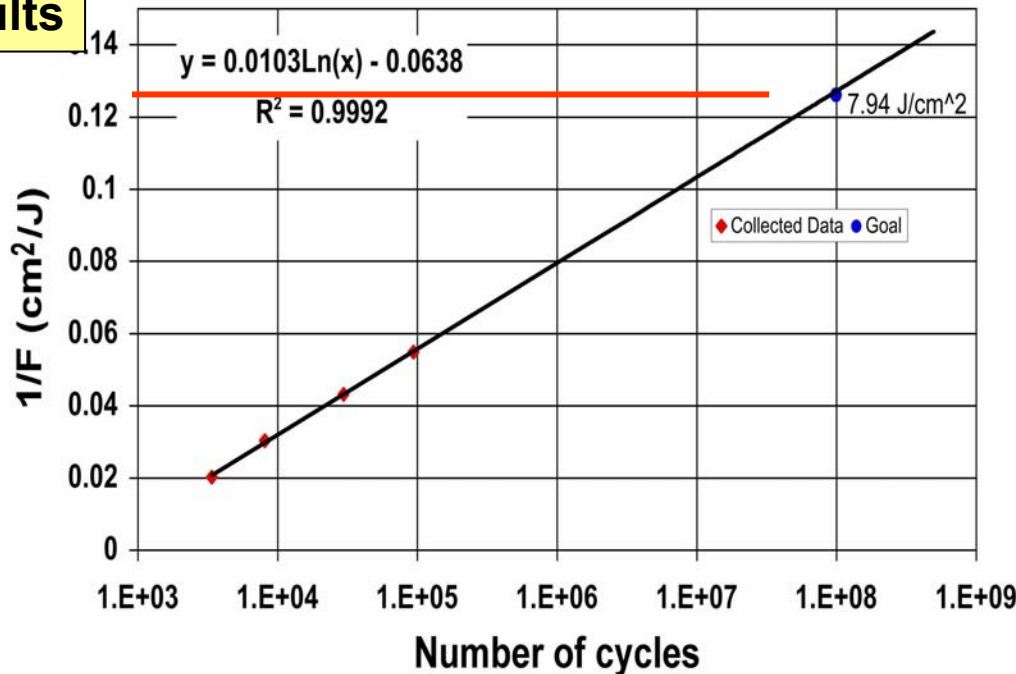
# Final Optic:

Grazing Incidence Aluminum Mirror meets IFE requirements for reflectivity (>99% @ 85°) and required long term damage threshold ( 8 J/cm<sup>2</sup>)

## Concept



## Results

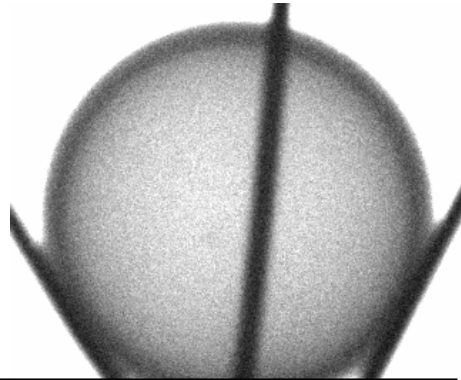


## Improvements

Lifetime should be improved by using Al alloys that have high yield strength in their annealed state

|                 |         |
|-----------------|---------|
| Pure Al:        | 20MPa   |
| Al 2024 (3% Cu) | 97 MPa  |
| Al 7075 (3% Zn) | 147 MPa |

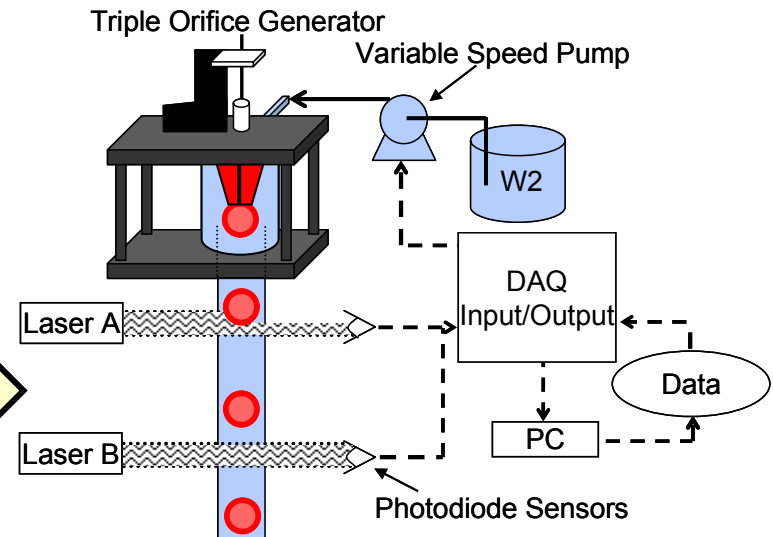
# Target fabrication: We have mass-produced foam shells that *almost* meet all the specifications



X-Ray picture of batch produced foam shell 4 mm dia, 400  $\mu$  wall

- ✓ Diameter: 4-5(4.1\*) mm  $\pm$  0.2 mm
- ✓ CH foam wall: 250-300(290\*)  $\mu$ m
- ✓ High-Z coat: 500 Å
- ✓ Density: 20-120(100\*) mg/cc
- ✓ Pore size:  $\sim$  1  $\mu$ m
- ✗ CH full density overcoat: 1-5  $\mu$ m
- ✗ Non-concentricity: <1%\*

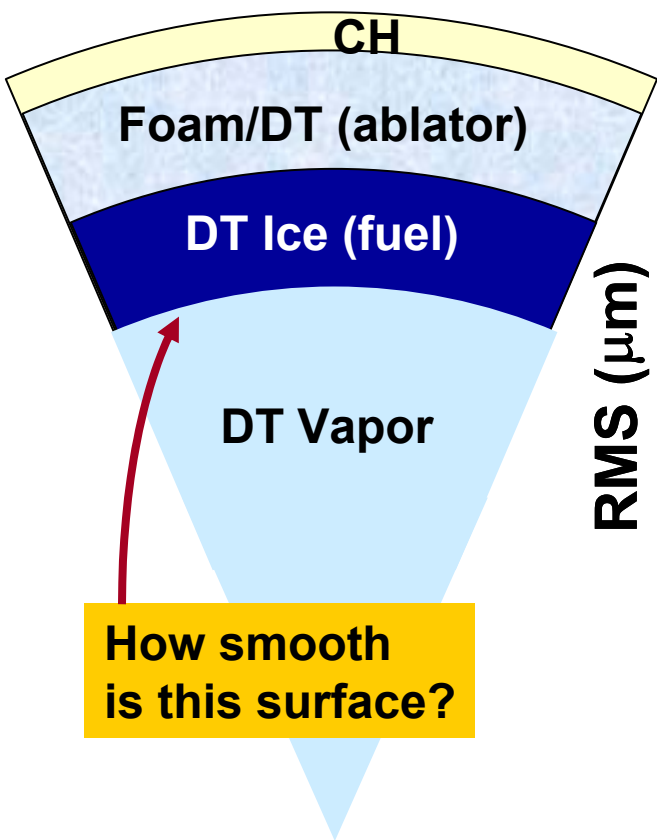
Produced 22 shells/min,  
5 mm diameter,  $\pm$  40  $\mu$ m (< 1 %)  
Automatic feedback process  
controls shell diameter



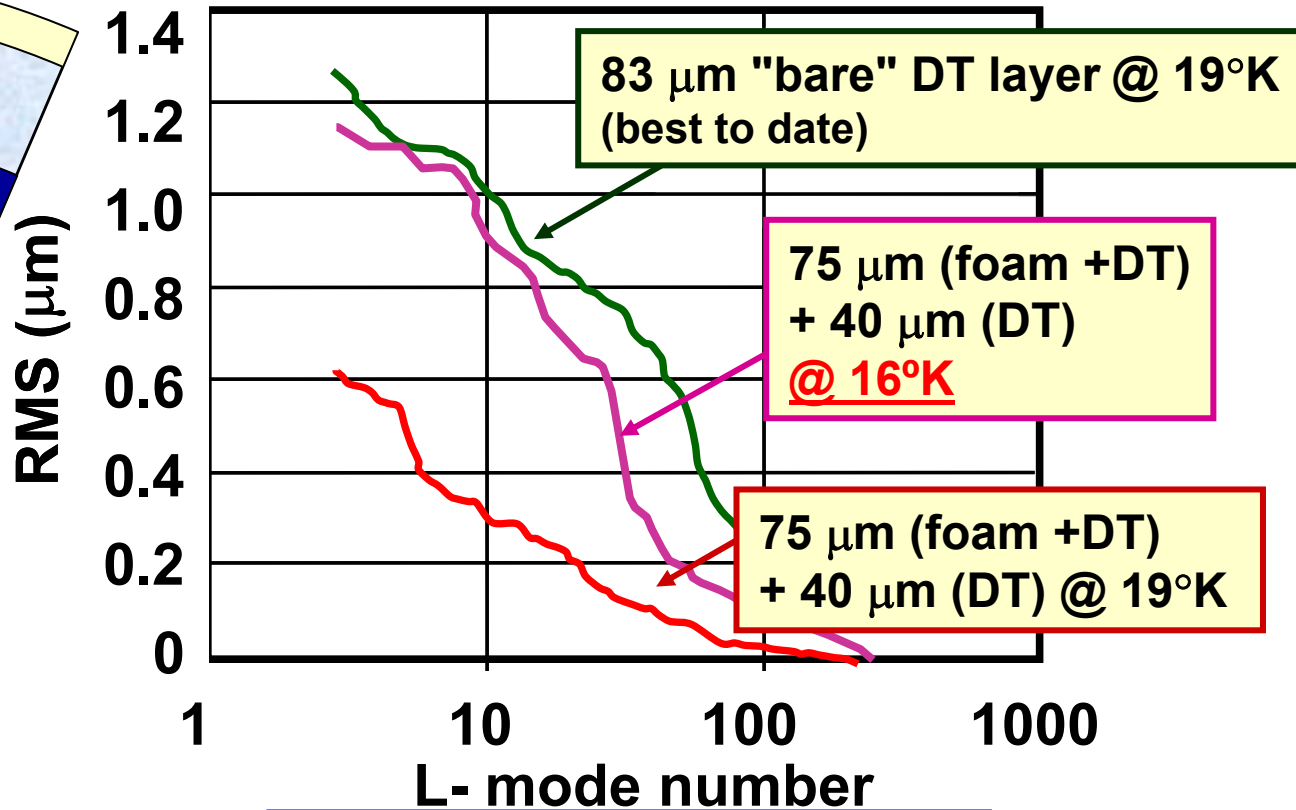
Not to scale

Brian Vermillion (GA)  
Diana Schroen and Jon Streit (Schaffer)

DT ice grown over a foam underlay is smoother and thermally more robust than a pure DT layer... exceeds IFE specs of  $< \sim 1 \mu\text{m RMS}$



How smooth is this surface?



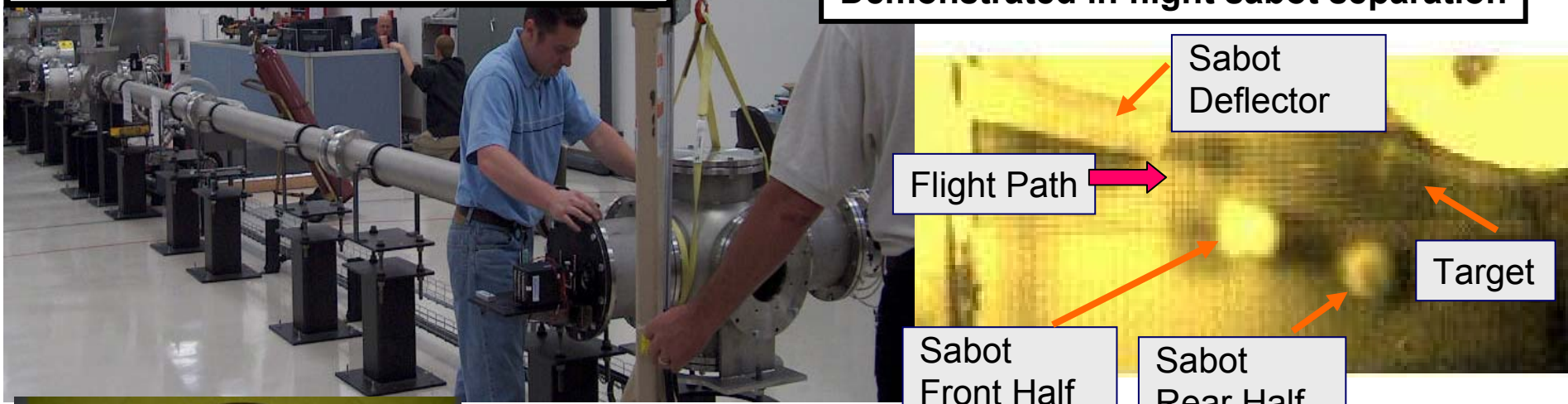
Cumulative Reverse Spectra RMS  
 $\Sigma$  [L-mode (256-n)]  
 $T = 19^\circ\text{K}$

# Target Injector / Tracking Progress

- ◆ Light gas gun injector in rep-rate operation
- ◆ Achieved 400 m/sec (need 50-400 m/sec)
- ◆ Demonstrated separable sabot
- ◆ Target placement accuracy +/-10 mm (need ~5 x better)

Target Injection and Tracking system

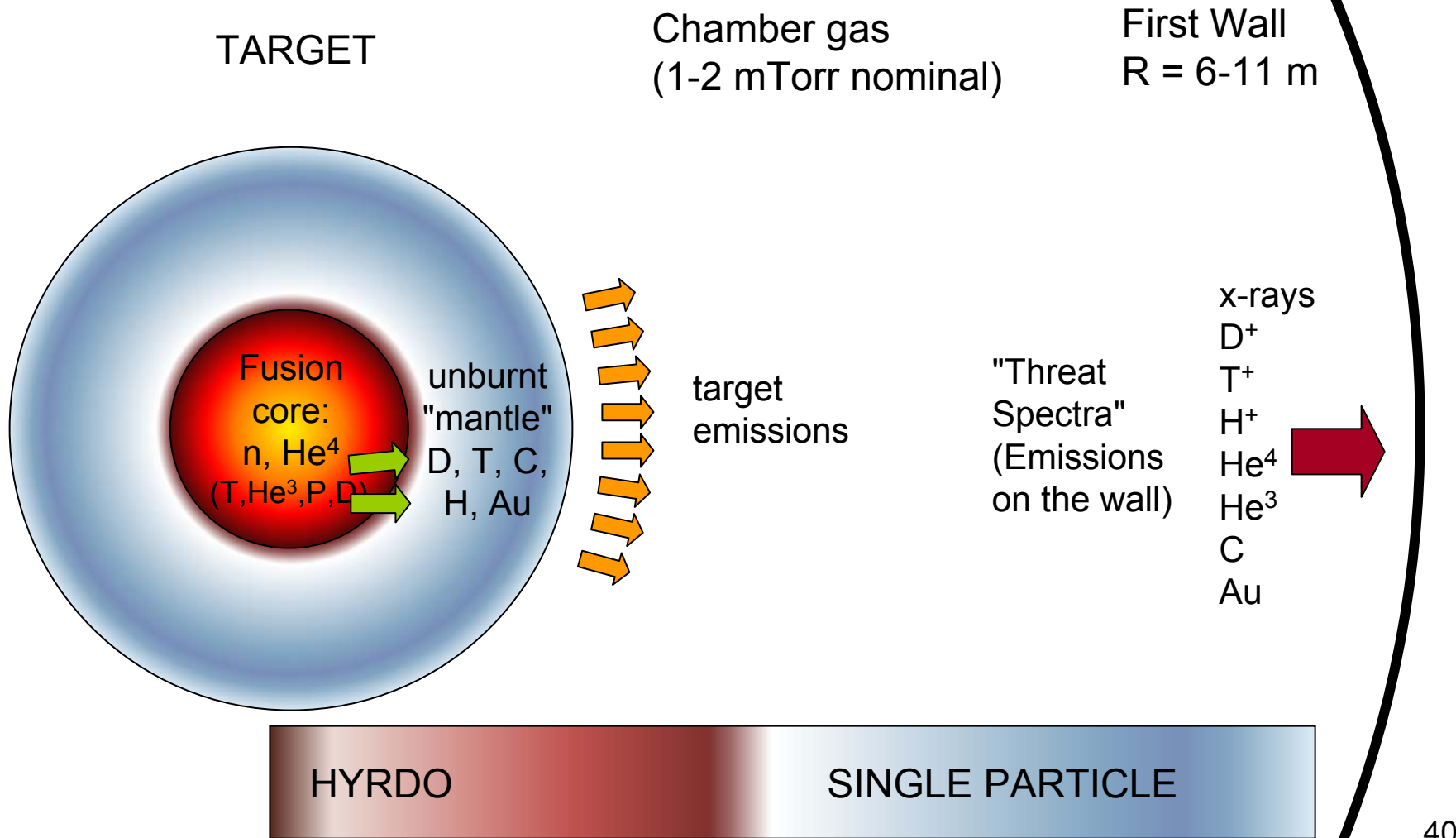
Demonstrated in flight sabot separation



**Whats left:  
Better placement  
Target engagement**

**R..Petzoldt,  
B. Vermillion,  
D. Goodin,  
G. Flint, et al  
General Atomics**

**We need to predict the spectra, fluence and pulse shape of the target emissions incident on the first wall.. aka the "threat spectra"**

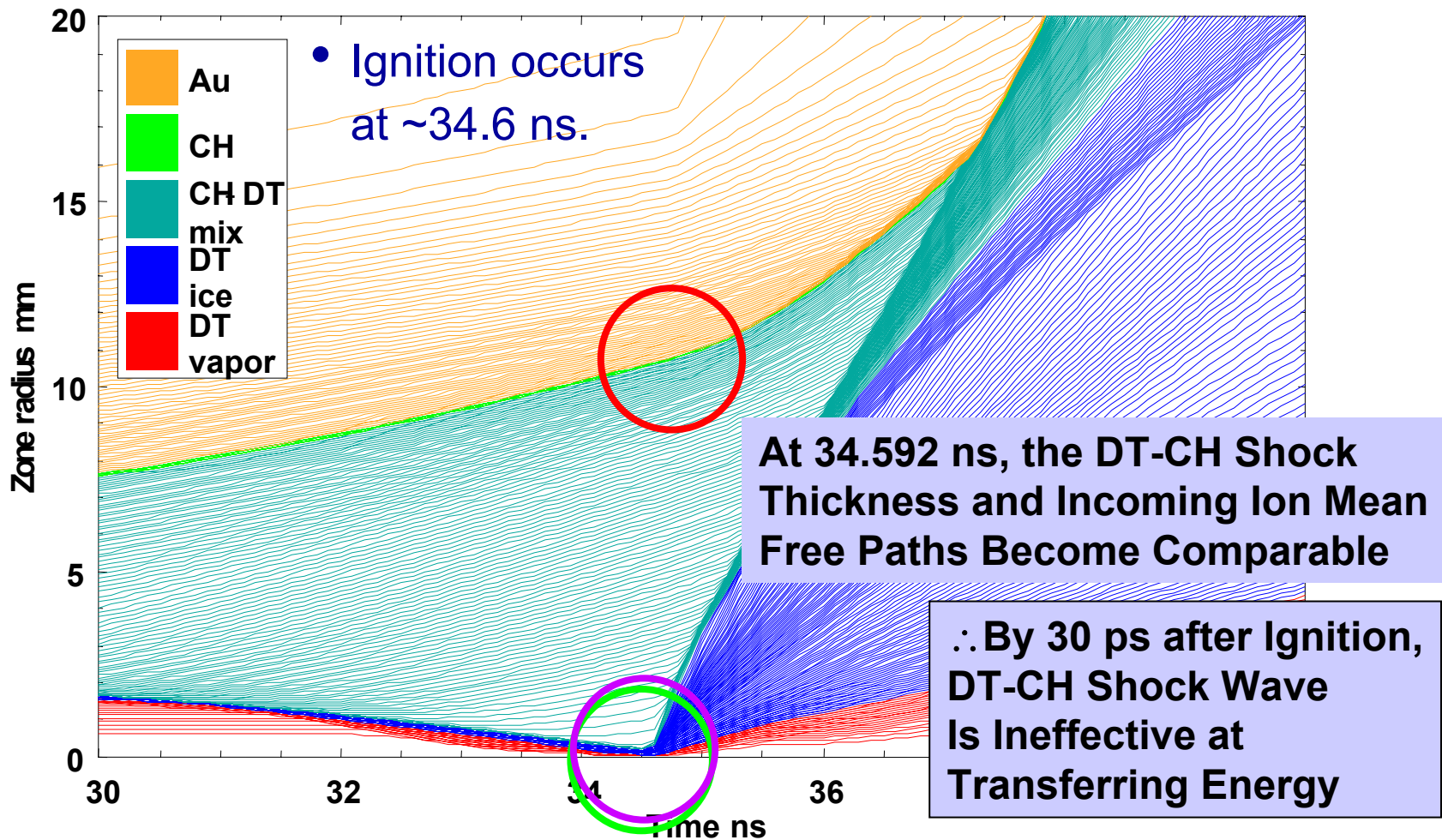


the big unknown...where is this transition? Threat spectra may depend critically on this !!

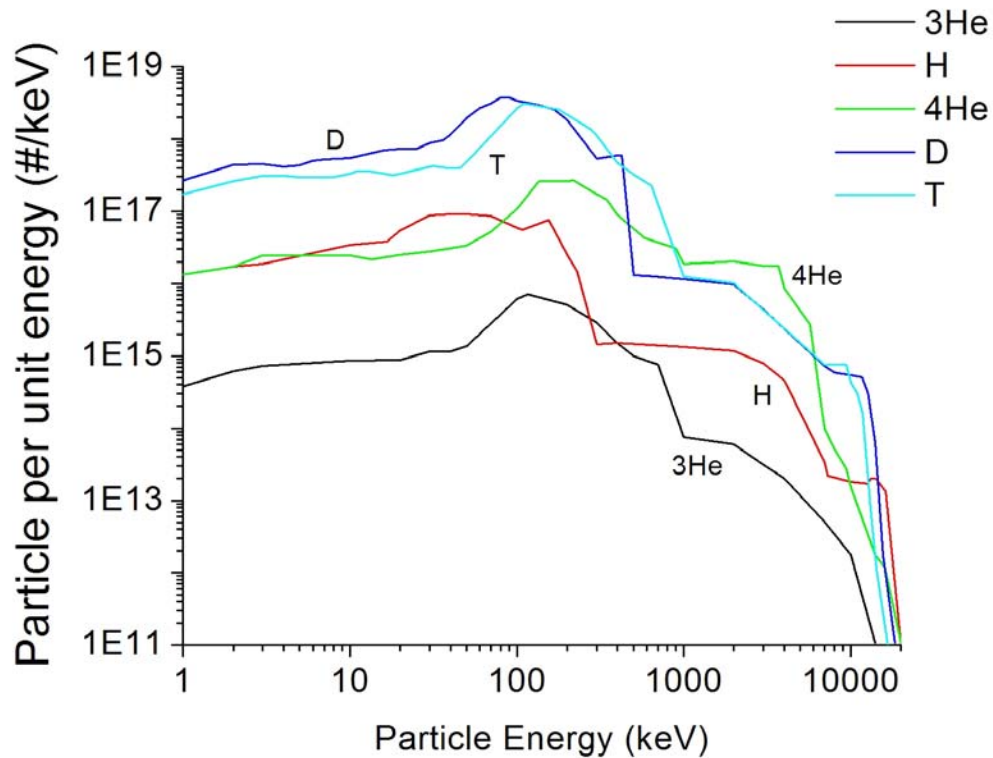


# Time near Ignition is the key to determining the threat spectra

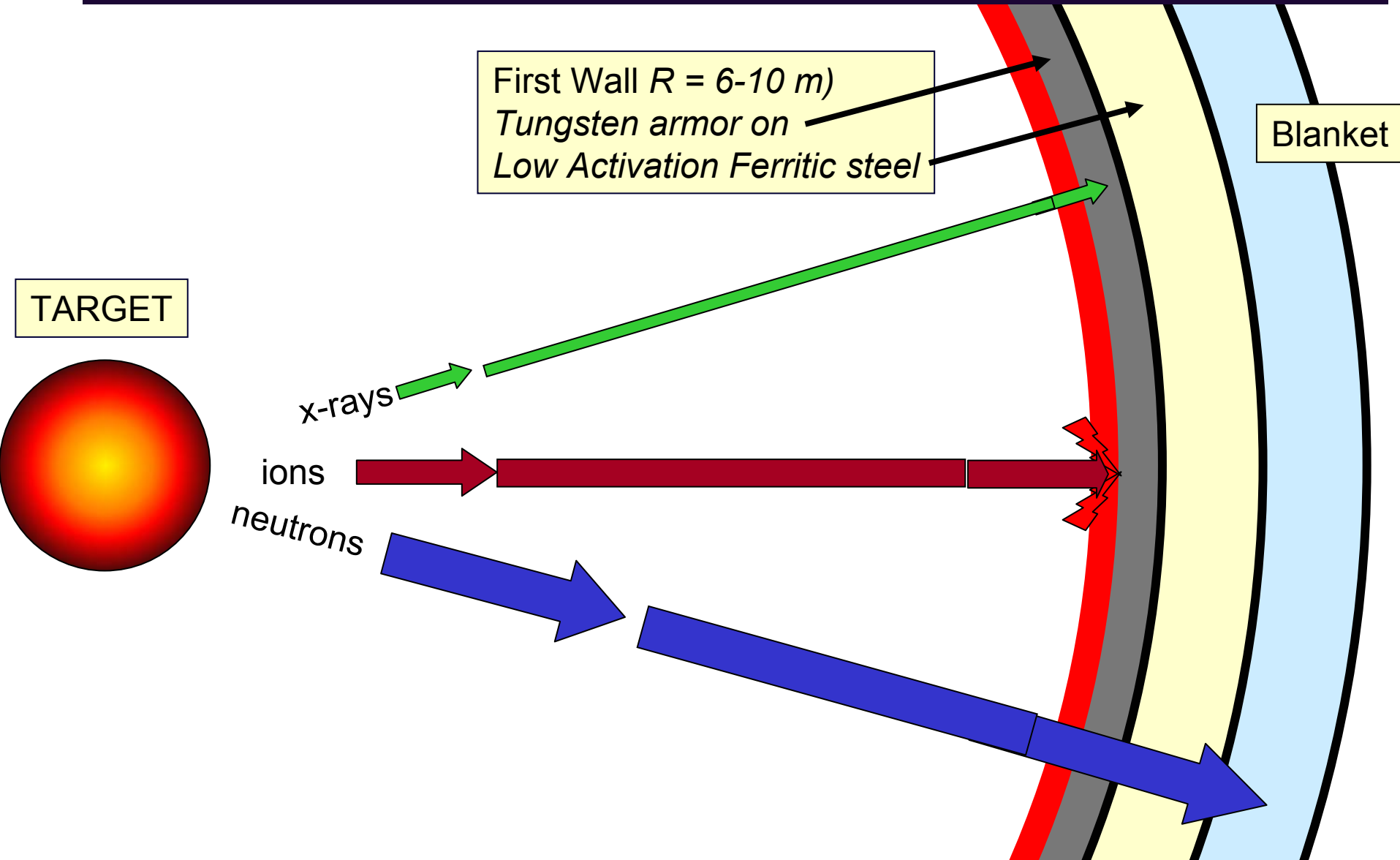
Lagrangian constant-mass zones from BUCKY run of HAPL case



# We have been using a chamber threat spectra based on a pure hydro model



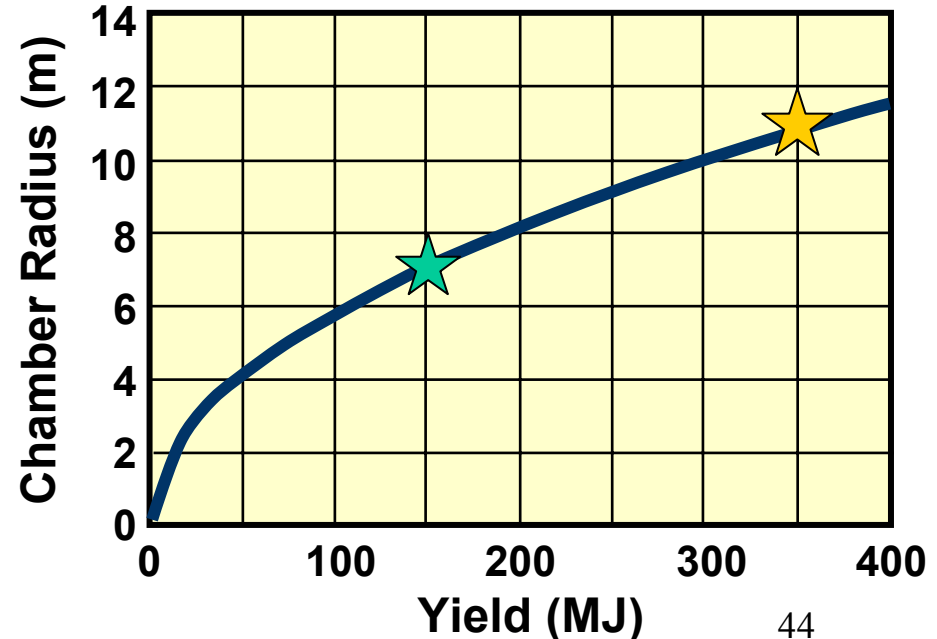
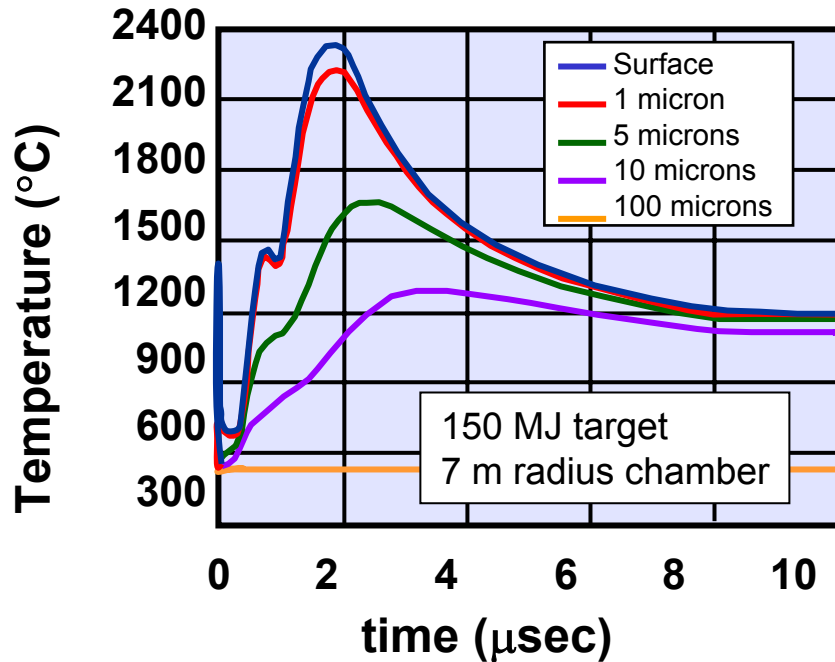
# The ions pose the biggest threat to the first wall



We have established a "chamber operating" window that simultaneously meets the requirements for efficiency, wall survival, and target injection:

**First wall is tungsten armor bonded to low activation ferritic steel**

**1 mm W armor, 3.5 mm FS,  $T_{\text{coolant}} = 575^{\circ}\text{C}$ , Max Surface =  $2400^{\circ}\text{C}$**

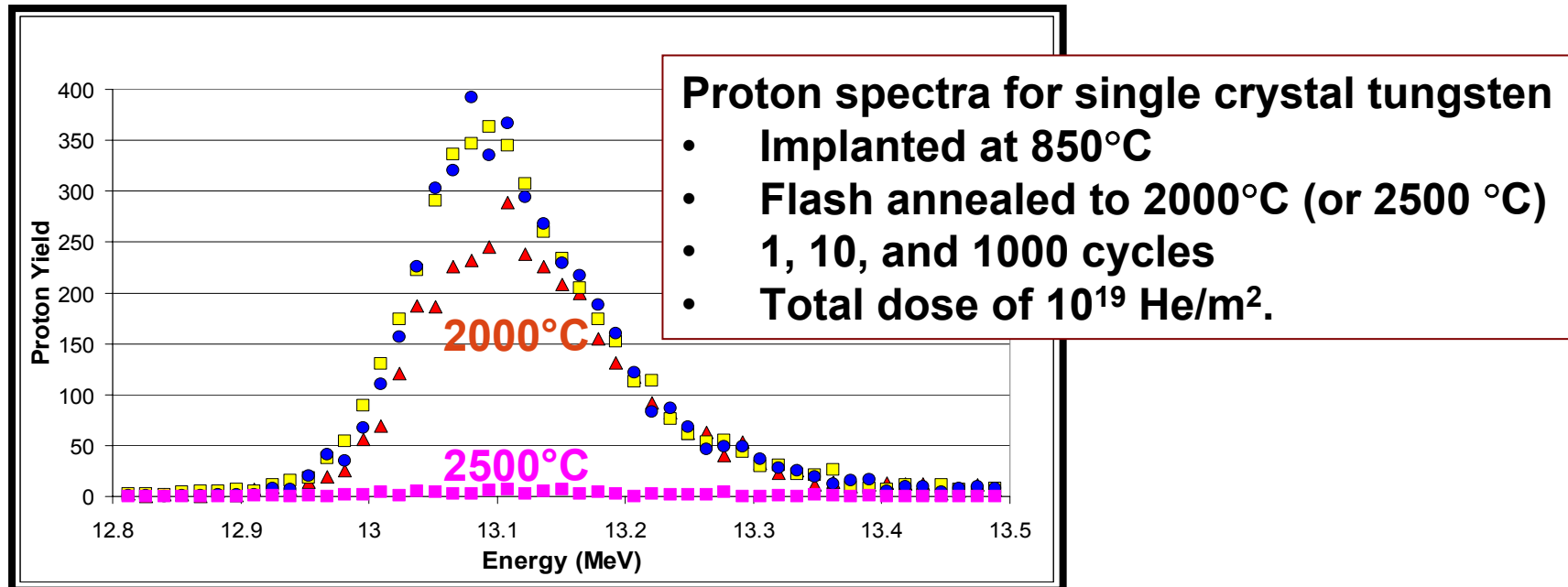


# **Three issues for long term (3-5 year) survival of the first wall**

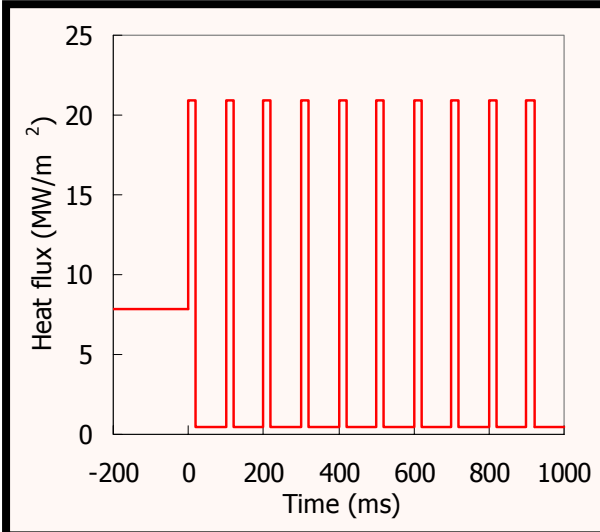
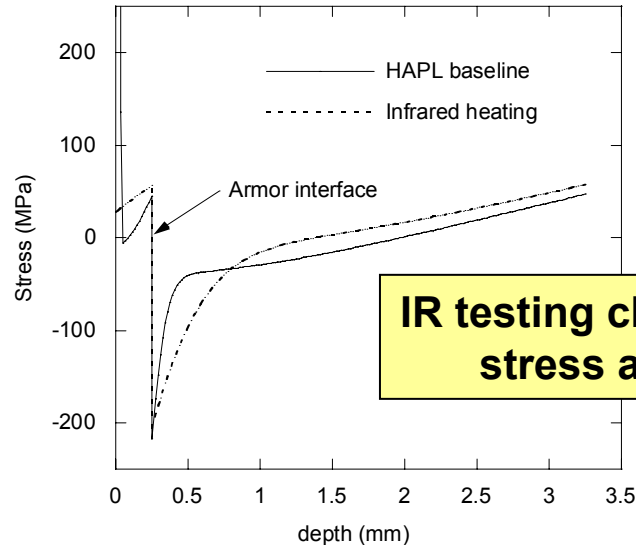
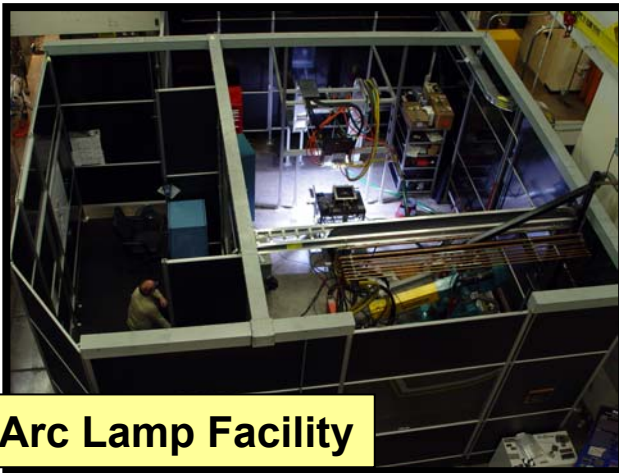
- 1) Helium retention**
- 2) Bonding W to Steel base**
- 3) Thermo-mechanical Fatigue**

# Helium Retention: Experiments show may be not be a problem at IFE Conditions

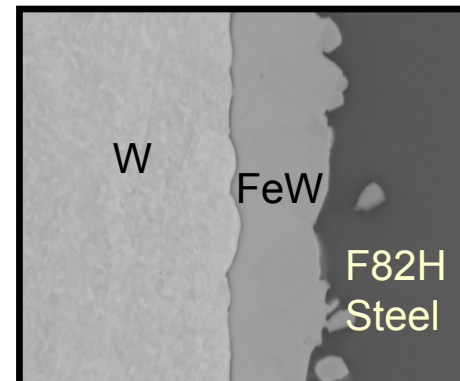
Amount of retained helium is lowered significantly when:  
Dose is spread out over large number of cycles  
Sample is flash annealed to prototypical temperatures



# Bond strength: We are using the Oak Ridge High Intensity Infrared Arc Lamp to study the long term integrity of the Tungsten-Steel bond



Exposure cycles



Lance Snead,  
ORNL

No degradation of bond after 10,000 shots  
but interface temperature was 900 °C,  
(lamp too intense)

# Thermo-mechanical fatigue:

We are using an array of facilities to expose FW materials to expected target emissions

**BIG ISSUE...DOES OBSERVED ROUGHENING LEAD TO MASS LOSS?**

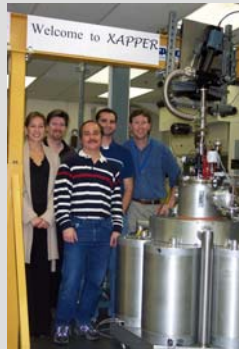
## X-rays:

XAPPER

*Latkowski (LLNL)*

Z [confirmation]

*Tanaka (SNL)*



## Ions:

RHEPP

*Renk (SNL)*



## Laser:

Dragonfire

*Najmabadi (UCSD)*



## Experiments:

Spectra

Surface temperature

TEM: sub-surface cracks

## Modeling:

Predict

Surface temperature

Sub surface cracks

Stress modeling to get evolution of fatigue

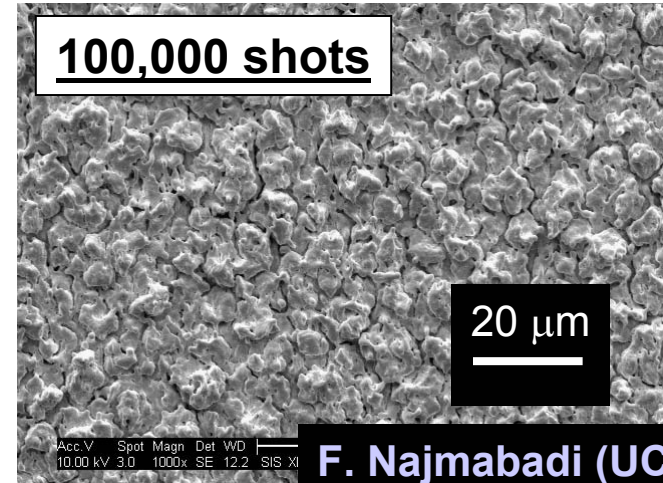
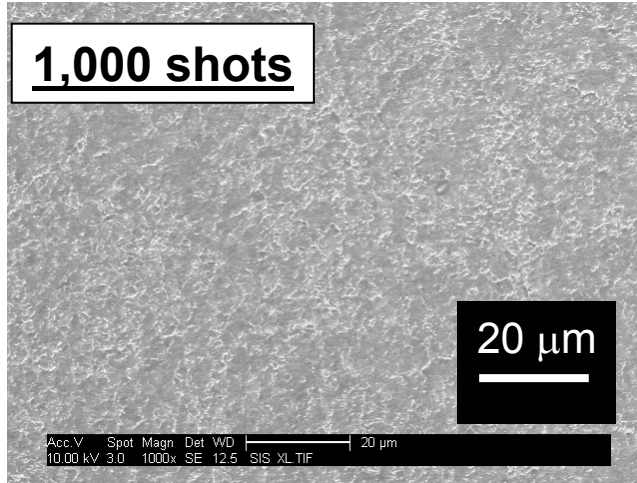
*Blanchard (Wisc)*



# Thermo-mechanical fatigue experiments and modeling

Long term exposure of tungsten with shows surface will crack...

Laser  
 $T_0 = 500\text{ }^\circ\text{C}$   
 $\Delta T = 2000\text{ }^\circ\text{C}$

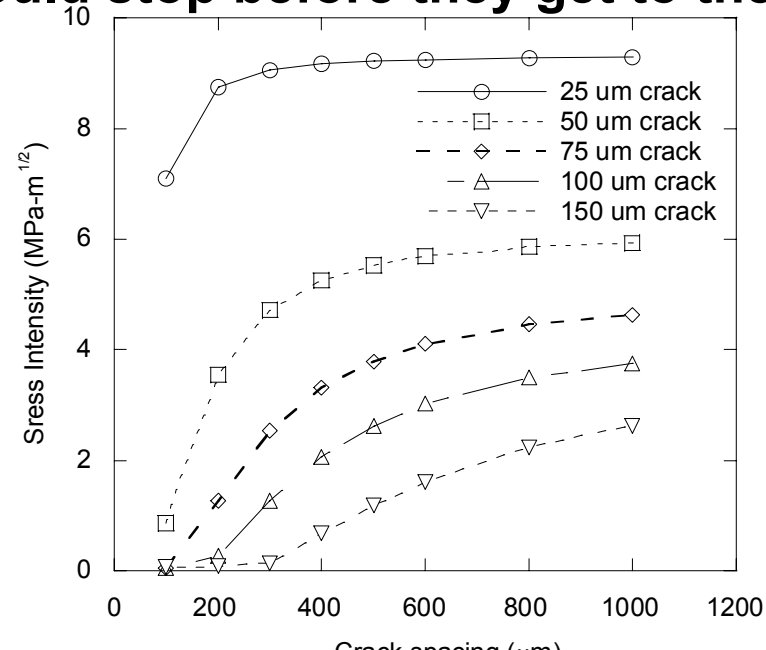


F. Najmabadi (UCSD)

But modeling shows cracks should stop before they get to the substrate:

Modeling also shows pre "castellating" the surface will arrest cracks at a shallower depth

J. Blanchard (Wisc)  
N. Ghoneim (UCLA)



# *Main points of the talk*

## **Fusion Energy based on lasers and direct drive targets**

Can lead to an attractive electricity generating power plant

## **Developing Laser Fusion as an integrated system**

Simultaneously addressing the science and engineering

## **Direct Drive Pellet Designs**

**Computer Models** show target gain  $> 150$

(need  $>100$  for energy)

Underlying codes backed with experiments

## **KrF Lasers**

Attributes : Beam uniformity, wavelength, cost, scaling to large systems

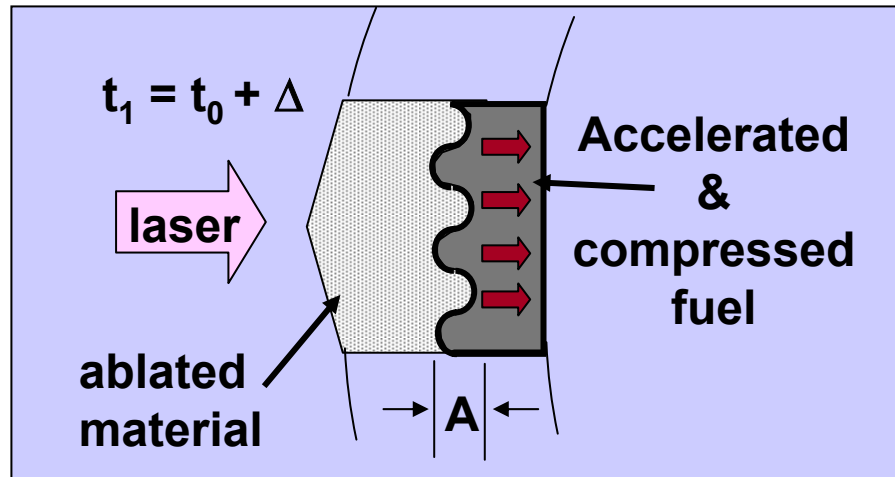
Technologies for rep-rate & efficiency look good,

Biggest challenge: durability of pressure foil

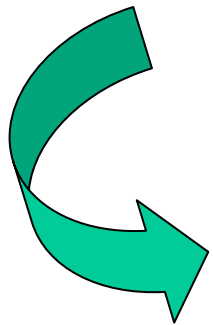
## **Progress made in the other Laser IFE components**

# **TARGET PHYSICS- THE DETAILS**

# High Gain Direct drive requires control of Rayleigh Taylor Instability: Requires minimizing both the initial mass modulations & the growth rate



Amplitude of mass modulations



$$A(t) = A_0 e^{\gamma t}$$

Rayleigh Taylor growth factor

**STEP #1:**

*a. Raise Isentrope (lower the density) of the ablator*

Initial mass modulation

Laser non-uniformities

Target non-uniformities

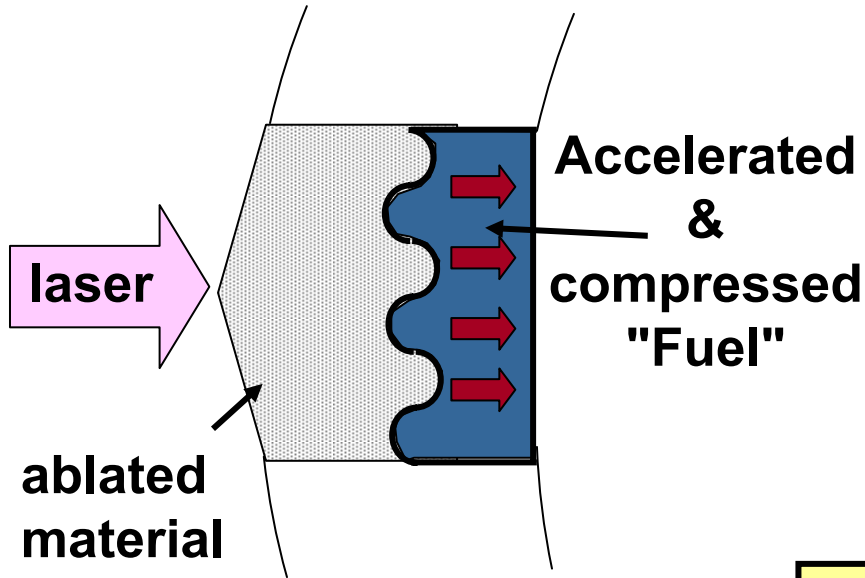
**STEP #2:**

*a. Use a Smooth Laser Beam*

*b. Reduce Laser Imprinting*

*c. Make target outer surface smooth*

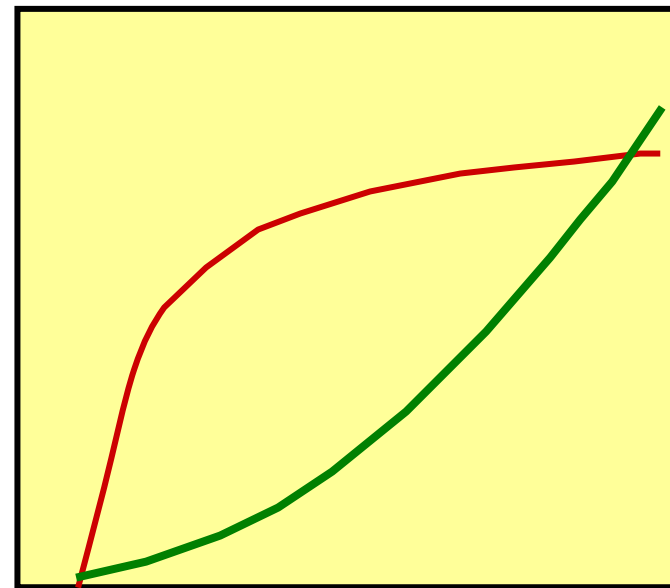
# Step 1: Lower the growth rate by raising the isentrope of *just* the ablator.



$$\gamma \sim 0.9 (\text{kg})^{1/2} - 3 \text{ kV}_a$$

where  $V_a \propto 1/n$

Takabe H. and Bodner  
1985 *Phys. Fluids* 28 3676

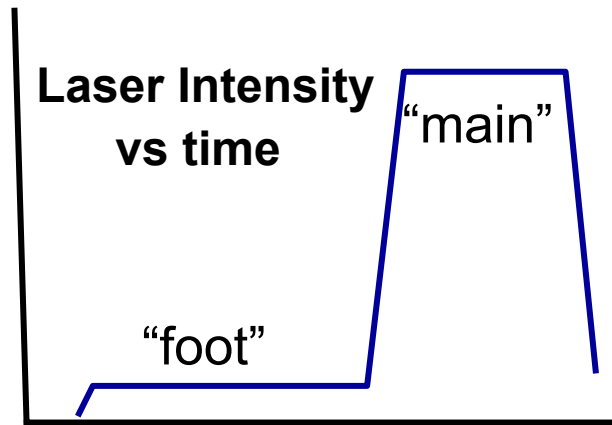


$$\text{Fusion gain} = \propto n^2$$

n (density) →

# ***How to raise Isentrope of just the Ablator***

- preheat the ablator (decrease density), to mitigate Rayleigh Taylor growth,
- but keep the fuel cold (dense), to maximize gain



## **Can be done with radiation**

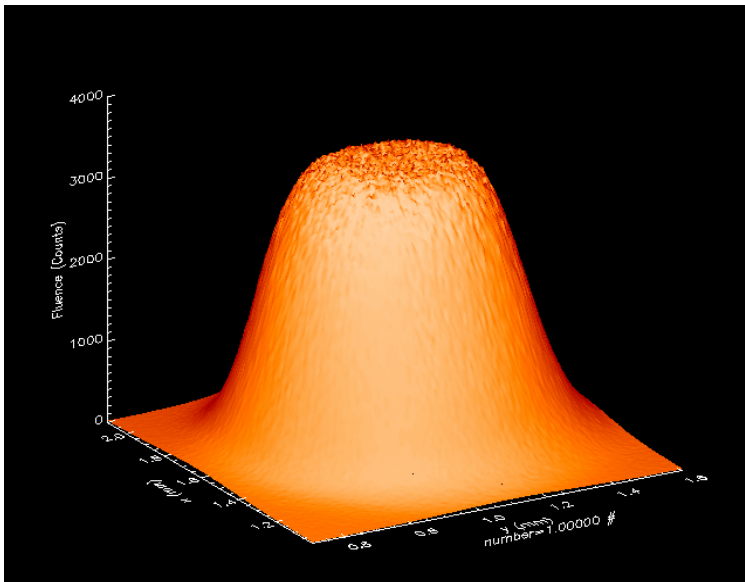
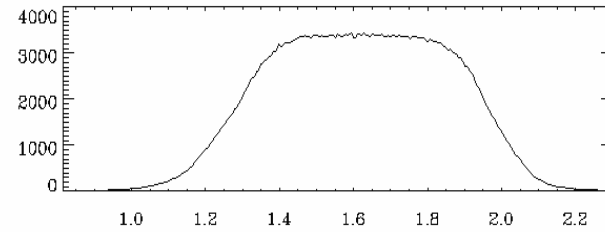
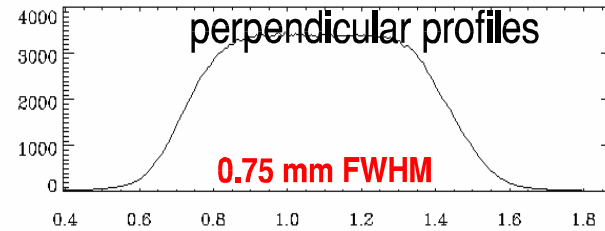
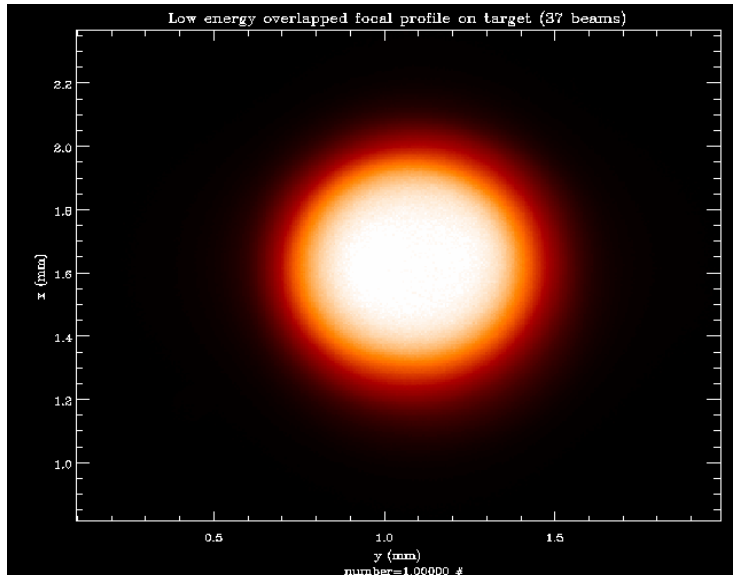
1. Foot produces low energy x-rays from high Z layer outside target
2. Ablator made of CH Foam + DT (ablator)
3. Radiation stops in foam to heat ablator
4. Radiation does not get to pure DT so fuel stays cold

## **Can be done with shocks**

1. Tailor laser pulse shape to launch low intensity shocks through ablator.
2. Time shocks to dissipate before getting into fuel

# STEP #2a Smooth Laser Beam:

The NRL Nike KrF laser produces very uniform laser beams



For 50% of the FWHM diameter:

Power tilts < 2%

Quadratic curvature : < 3%

RMS speckle non- uniformity:

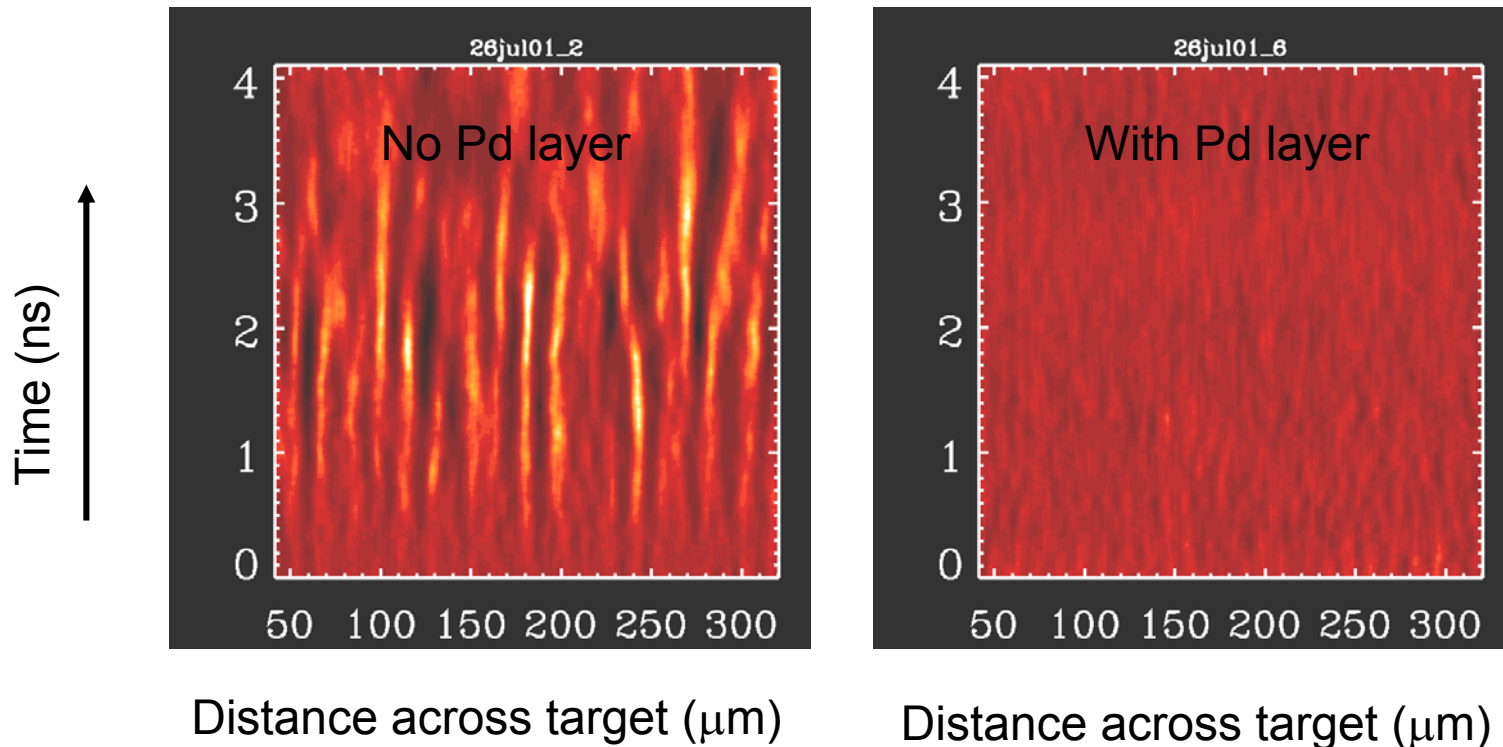
0.3 - 1.3% (*all modes*)

## ***Step #2b Reduce "Imprinting"*** ***(Effectively smooth laser even further)***

Experimental results show a thin high-Z outer layer (e.g. 1200 Å Pd) substantially reduces the effective laser non-uniformity....

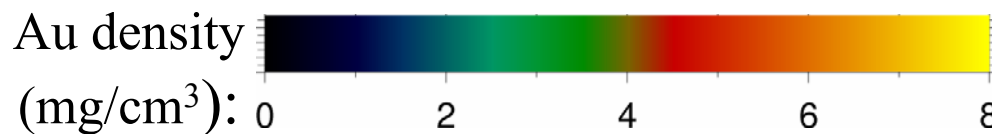
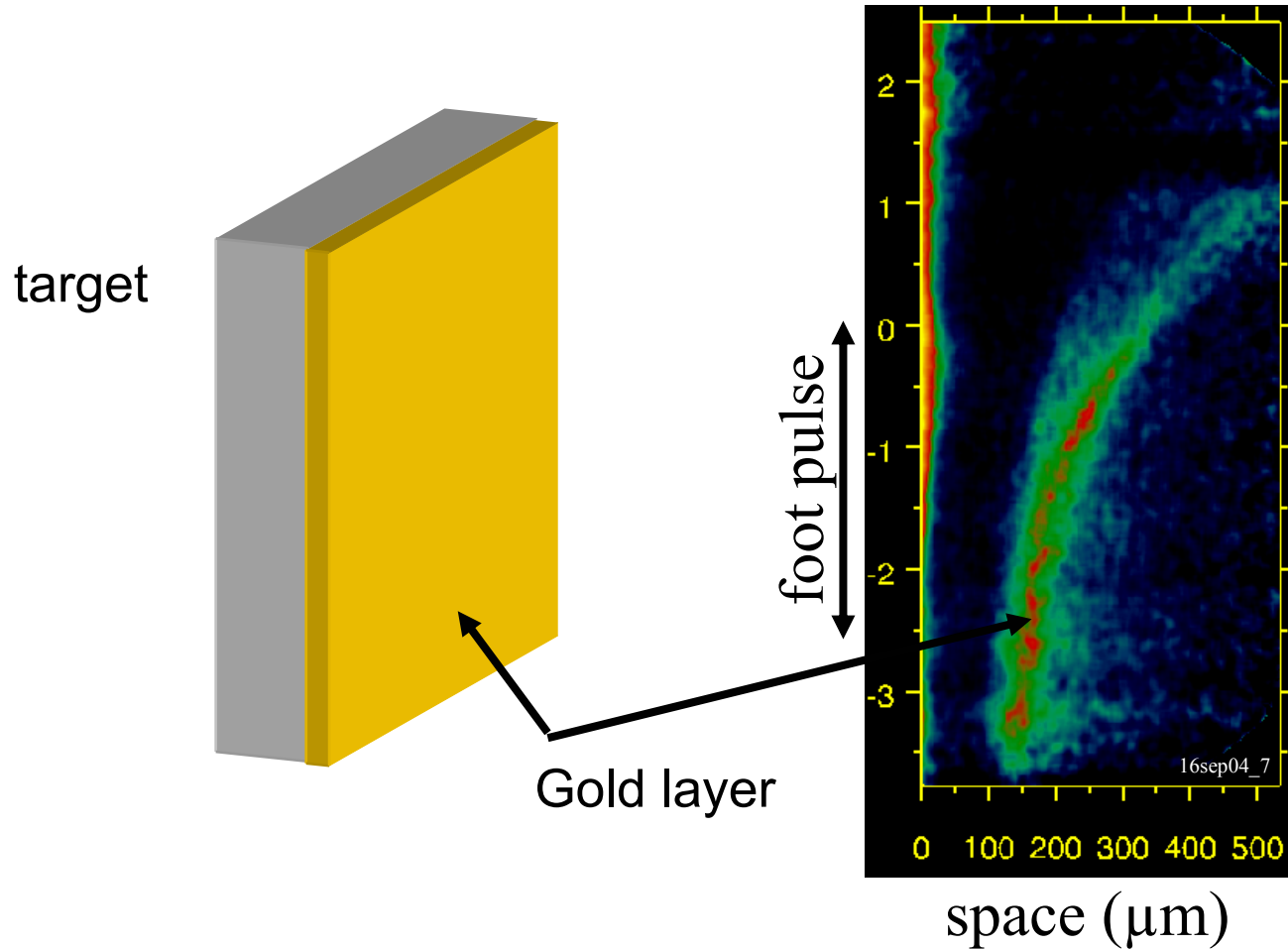
I.E. reduces "seed" for instability

X-Ray Streak radiographs of ablatively accelerated planar targets





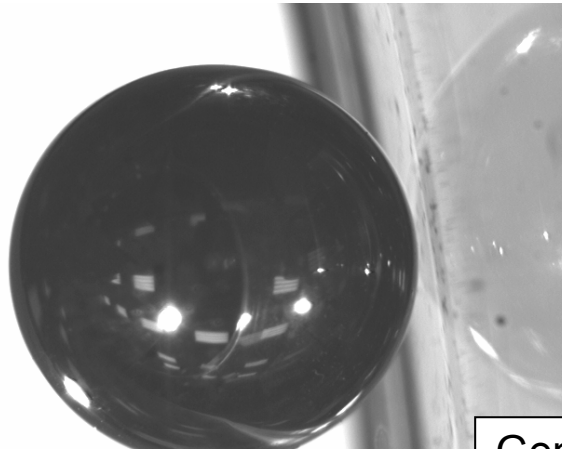
# High Z layer provides early time, very uniform, x-ray illumination of target



## ***Step 2c: Make target outer surface very smooth***

---

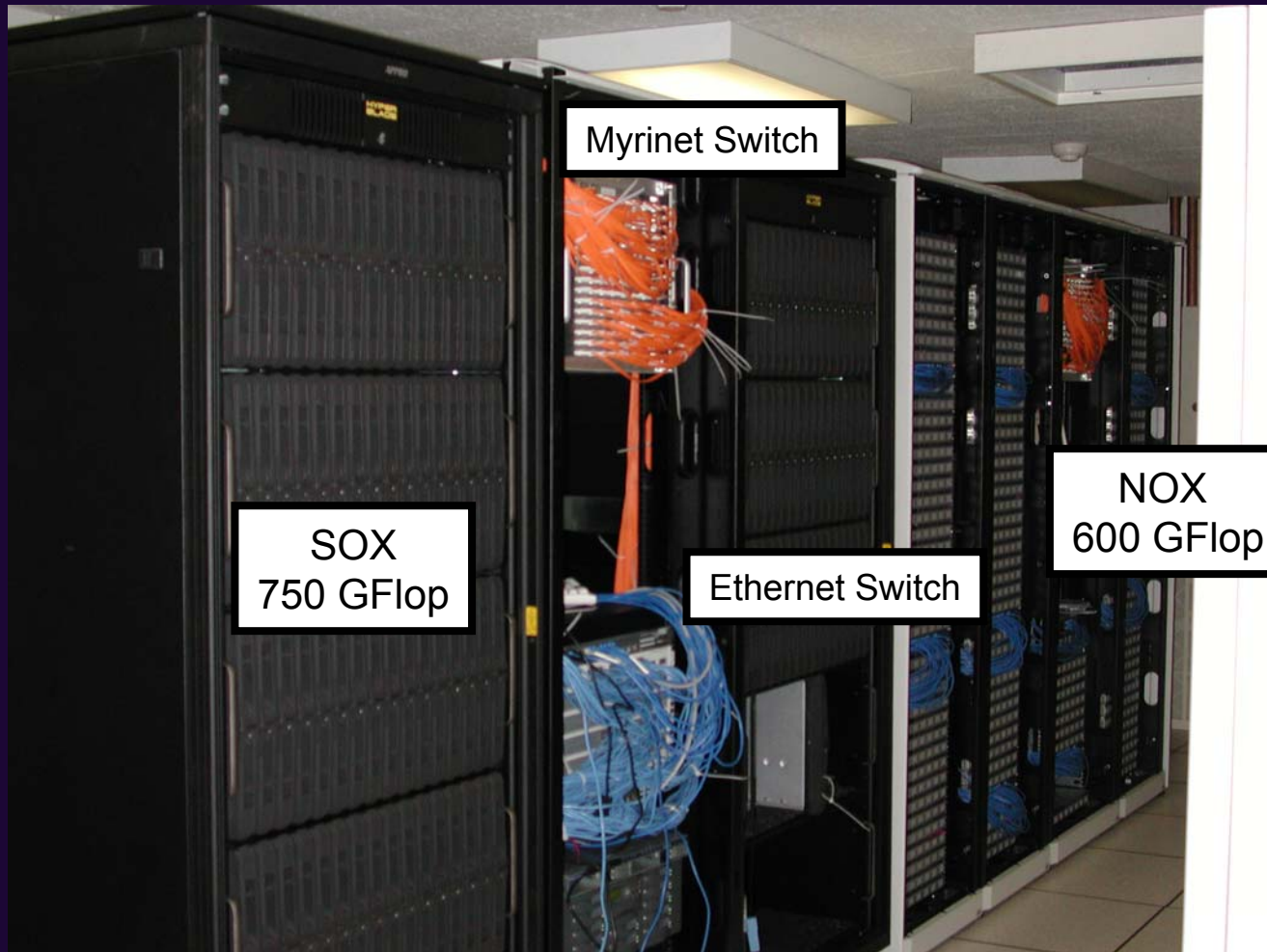
***Thin Au/Pd coatings  
with  
smooth surface finish:  
high DT permeability  
and high IR reflectivity.***



General Atomics



# NRL's large computer clusters allow routine high resolution simulations of pellet implosions.



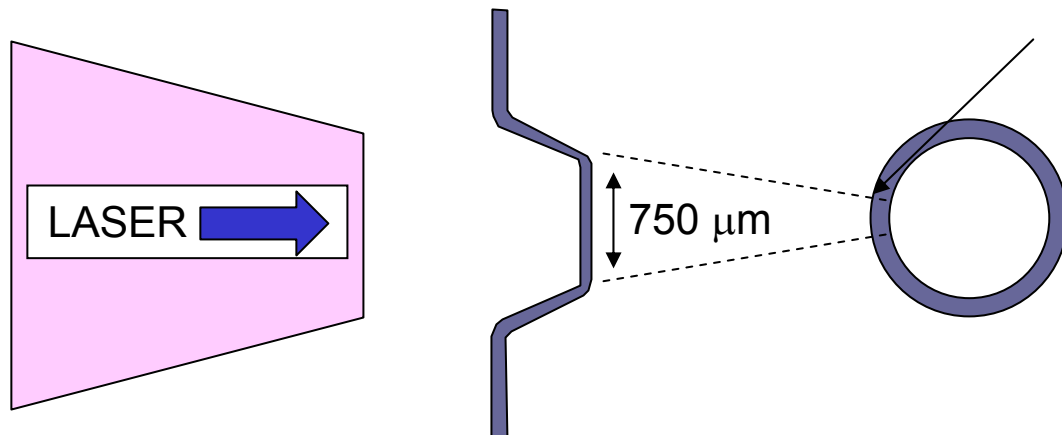
2 "Self-built" 256-processor supercomputer clusters "NOX" and "SOX"  
Processors: NOX 2.4 GHz Xeon, SOX 1.8 GHz Opteron  
Interconnect: Switched Myrinet 2000

# The Nike KrF laser accelerates planar targets at close to the same conditions as in a high gain target.

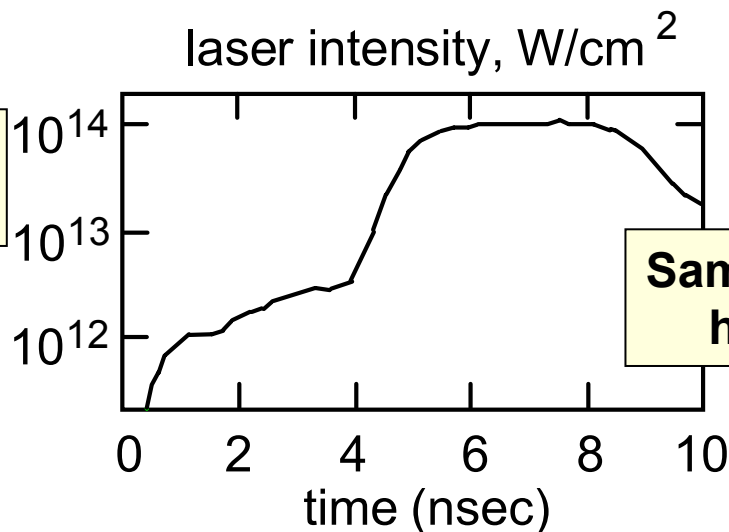
Laser 2-3 kJ  
4 ns main pulse

Planar D2 + foam target...  
(same material)

same areal mass  
as high gain target

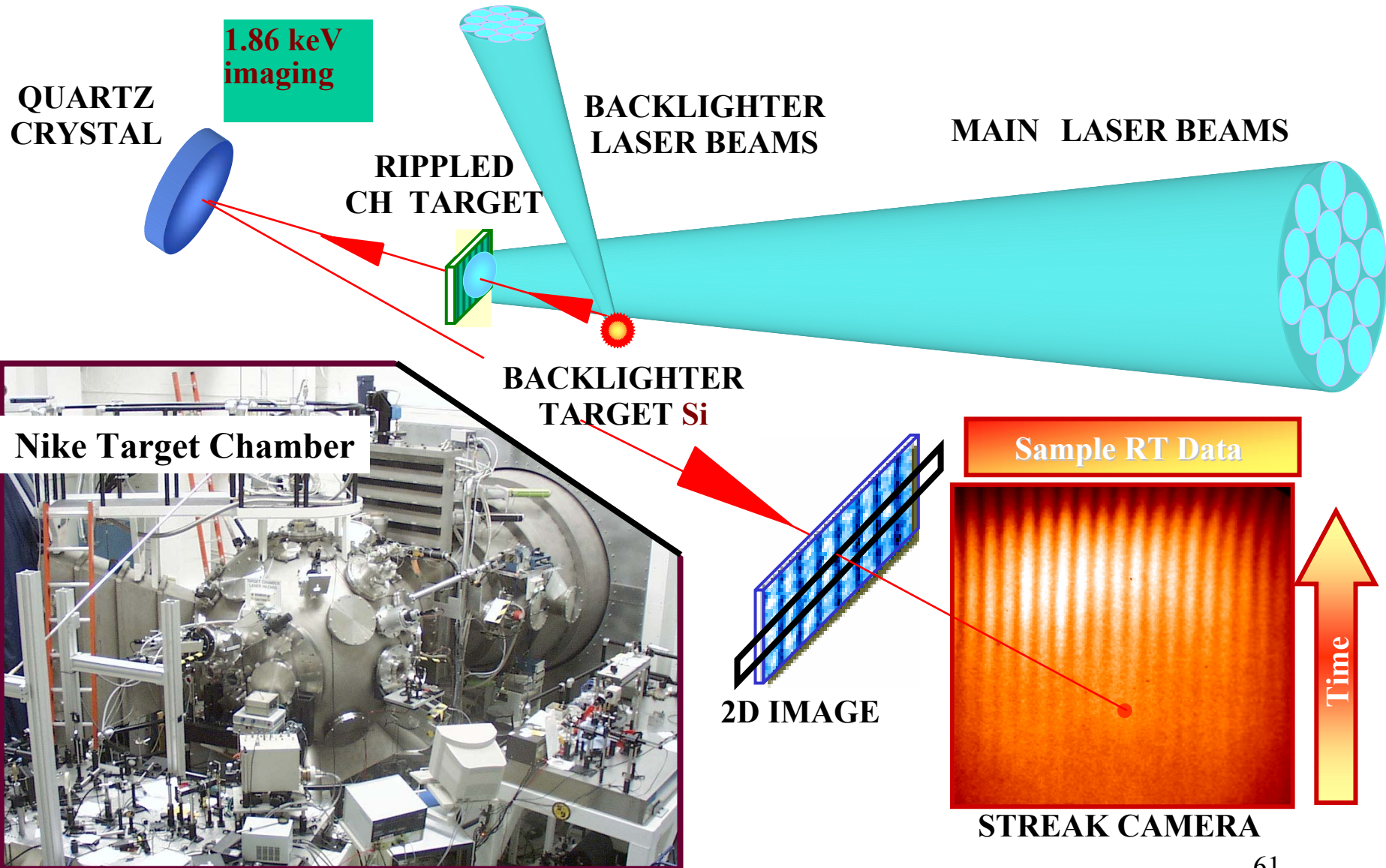


About same intensity  
as high gain target



Same pulse shape as  
high gain target

# Nike is ideally suited to study hydrodynamics in planar geometry



# NRL target physics codes (aka FAST) have been benchmarked with experiments on Nike Laser

